

TM 9-1240-311-34P

DEPARTMENT OF THE ARMY TECHNICAL MANUAL

DIRECT SUPPORT AND GENERAL SUPPORT
MAINTENANCE REPAIR PARTS AND SPECIAL TOOLS LIST
[INCLUDING DEPOT MAINTENANCE REPAIR PARTS]
FOR

TELESCOPE, ARTICULATED: M127 (1240-437-1254)
AND M119 (1240-762-9333)

AND HANGER ASSEMBLY (1240-906-7945)



HEADQUARTERS, DEPARTMENT OF THE ARMY
NOVEMBER 1971

**DIRECT SUPPORT AND GENERAL SUPPORT MAINTENANCE REPAIR PARTS
 AND SPECIAL TOOLS LIST (INCLUDING DEPOT MAINTENANCE
 REPAIR PARTS AND SPECIAL TOOLS)
 FOR
 TELESCOPE, ARTICULATED: M127 (1240-437-1254) AND M119 (1240-762-9333)
 AND HANGER ASSEMBLY (1240-906-7945)**

Current as of 2 November 1971

Table of Contents

	Page	Illus Figure
Section I. Introduction01	
II. Repair parts list05	
Group 2370 Articulated telescope M127	5,8	1, 2
Articulated telescope M1	8,11	2, 3
01. Headrest and bracket assembly14	4
02. Eyepiece assembly :		
Eyepiece housing assembly.....	16	5
Eyepiece assembly.....	18	6
Diopter knob assembly20	7
Cell assembly23	8
Eyepiece housing25	9
03. Dual power optical assembly:		
Housing28	10
Cell assembly31	11
04. Objective tube assembly34	12
05. Reticle projector assembly:		
Reticle projector37	13
Lampholder support39	14
Lampholder assembly42	15
Boresight housing assembly44, 47	16, 17
Boresight knob assembly50	18
Projector housing54	19
Projector knob assembly56	20
Projector housing59	21
Lamp housing assembly62	22
Electrical connector65	23
Reticle holder assembly (missile)68	24
Reticle holder assembly (conventional)71	25
06. Filter and porro prism housing assemblies:		
Porro prism and housing assembly74	26
Prism assembly77	27
Filter assembly80	28
Filter lever84	29
Filter housing assembly86	30
Section III. Special tools list89	
Group 2370 07. Equipment:		
Hanger assembly90	31
Section IV. Federal stock number and reference number index92	

*This manual supersedes the repair parts and special tools list portion of TM 9-1240-311-35, 25 April 1966.

Section I. INTRODUCTION

1. Scope.

This manual lists repair parts, special tools, and support equipment required for the performance of direct support, general support, and depot maintenance of the articulated telescope M127 and M119.

2. General

This Repair Parts and Special Tools List is divided into the following sections:

a. *Repair Parts List-Section II.* A list of repair parts authorized at the direct support, general support, and depot levels for the performance of maintenance. This list also includes parts which must be removed for the replacement of the authorized parts. Parts lists are composed of functional groups in ascending numerical sequence, with parts in each group listed in figure and item number sequence.

b. *Special Tools List-Section III.* A list of special tools, test and support equipment authorized for the performance of maintenance at the direct support, general support, and depot levels.

c. *Federal Stock Number and Reference Number Index-Section IV.* A list, in ascending numerical sequence, of all Federal stock numbers appearing in the listings followed by a list, in alphabetic sequence, of all reference numbers appearing in the listings. Federal stock number and reference numbers are cross-referenced to each illustration figure and item number appearance.

3. Explanation of Columns.

The following provides an explanation of columns found in the tabular listings.

a. *Source, maintenance, and Recoverability Codes (SMR).*

(1) *Source Code.* Indicates the source for the listed items. Source codes are:

Code	Explanation
P	Repair parts, special tools, and test equipment supplied from the GSA/DSA, or Army supply system, and authorized for use at indicated maintenance categories.
P2	Repair parts, special tools, and test equipment which are procured and stocked for insurance purposes because the combat or military essentiality of the end item dictates that a minimum quantity be available in the supply system.
P9	Assigned to items which are NSA design controlled: unique repair parts, special tools, test, measuring and diagnostic equipment, which are

Code	Explanation
	stocked and supplied by the Army COMSEC Logistic System and which are not subject to the provisions of AR 380-11.
P10	Assigned to items which are NSA design controlled: special tools, test, measuring and diagnostic equipment for COMSEC support which are accountability under the provisions of AR X80-41, and which are stocked and supplied by the Army COMSEC Logistic System.
M	Repair parts, special tools and test equipment which are not procured or stocked as such in the supply system but are to be manufactured at indicated maintenance levels.
A	Assemblies which are not procured or stocked as such but are made up of two or more units. Such component units carry individual stock numbers and descriptions, are procured and stocked separately, and can be assembled to form the required assembly only at indicated maintenance categories.
X	Parts and assemblies that are not procured or stocked because the failure rate is normally below that of the applicable end item or component. The failure, of such part or assembly should result in retirement of the end item from the supply system.
X1	Repair parts which are not procured or stocked. The requirement for such items will be filled by the next higher assembly or component.
X2	Repair parts, special tools and test equipment which are not stocked and have no foreseen mortality. The indicated maintenance category requiring such repair parts will attempt to obtain the parts through cannibalization or salvage. The item may be requisitioned, with exception data, from the end item manager for immediate use.
G	Major assemblies that are procured with PEMA funds for initial issue only as exchange assemblies at DS and GS level. These assemblies will not be stocked above DS and GS level or returned to depot supply level.

Note: Cannibalization or salvage may be used as a source of supply for any items source coded above except those coded X1 and aircraft support items as restricted by AR 700-42.

(2) *Maintenance Code.* Indicates the lowest category of maintenance authorized to install the repair parts and/or use the special tool or test equipment for each application. Capabilities of higher maintenance categories are considered equal or better. Maintenance codes are:

Code	Explanation
C	Crew/operator
O	Organizational maintenance
F	Direct support maintenance
H	General support maintenance
D	Depot maintenance

(3) *Recoverability Code.* Indicates whether unserviceable items should be returned for recovery or salvage. Items not coded are nonrecoverable. Recoverability codes are:

Code	Explanation
R	Repair parts (assemblies and components), special tools and test equipment which are considered economically repairable at direct and general support maintenance levels. When the item is no longer economically repairable, it is normally disposed of at the GS level. When supply considerations dictate, some of these repair parts may be listed for automatic return to supply for depot level repair as set forth in AR 710-50. When so listed, they will be replaced by supply on an exchange basis.
S	Repair parts, special tools and test equipment, and assemblies which are economically repairable at DS and GS activities and which normally are furnished by supply on an exchange basis. When items are determined by a GSU to be uneconomically repairable, they will be evacuated to a depot for evaluation and analysis before final disposition.
T	High dollar value recoverable repair parts, special tools and test equipment which are subject to special handling and are issued on an exchange basis. Such items will be repaired or overhauled at depot maintenance activities only. No repair may be accomplished at lower levels.
U	Repair parts, special tools and test equipment specifically selected for salvage by reclamation units because of precious metal content, critical materials, high dollar value, or reusable casings or castings.

b. *Federal Stock Number*, Indicates the Federal stock number assigned to the item and will be used for requisitioning purposes.

c. *Description*. Indicates the Federal item name and a minimum description required to identify the item. The last line indicates the reference number followed by the applicable Federal Supply Code for Manufacturer (FSCM) in parentheses. The FSCM is used as an element in item identification to designate manufacturer or distributor or Government Agency, etc., and is identified in SB 708-42.

d. *Unit of Measure (U/M)*. Indicates the standard or basic quantity by which the listed item is used in performing the actual maintenance function. This measure is expressed by a two-character alphabetical abbreviation, e.g., ea, in, pr, etc., and is the basis used to indicate quantities and allowances in subsequent columns. When the unit of measure differs from the unit of issue, the lowest unit of issue that will satisfy the required units of measure will be requisitioned.

e. *Quantity Incorporated in Unit*. Indicates the quantity of the item used in the breakout shown in the illustration figure, which is prepared for a functional group, subfunctional group, or an assembly. A "V" appearing in this column in lieu of a quantity indicates that no specific quantity is applicable, e.g., shims, spacers, etc.

f. *30-Day DS,/GS Maintenance Allowances*.

(1) The repair parts indicated by asterisk (*) entries in separate allowance column(s) for DS and GS represents those parts authorized for use at that category of maintenance and will be requisitioned on an "as required" basis.

(2) Allowance quantities are indicated in the special tools list section for special tools, TMDE, and other support equipment.

g. *1-Year Allowances Per 100 Equipments/Contingency Planning Purposes*. No entries will appear in this column.

h. *Depot Maintenance Allowances Per 100 Equipments*. This column indicates that the items identified with an asterisk (*) are authorized to be requisitioned "as required."

i. *Illustration*. This column is divided as follows:

(1) *Figure Number*. Indicates the figure number of the illustration on which the item is shown.

(2) *Item Number*. Indicates the callout number used to reference the item on the illustration.

4. Special Information.

a. Usable on codes are included in Column 3. Uncoded items are applicable to all models. Identifications of the usable on codes used in this publication are:

Code	Use On
A	Telescope M127
B	Telescope M119

b. Action change codes indicated in the left-hand margin of the listing page denote the following:

- N-Indicates an added item.
- C-Indicates a change in data.
- R-Indicates a change in FSN only.

c. The telescopes M127 and M119 are components of the fire control system of Armored Reconnaissance/Airborne Assault Vehicle M551 and are contained in the following manuals:

TM 9-2350-230-12	Operator and Organizational Maintenance Manual.
TM 9-2350-230-25P/2	Organizational, DS, GS, and Depot Maintenance Repair Parts and Special Tools List.

5. How to locate Repair Parts.

a. When Federal stock number or reference number is unknown:

(1) *First*. Using the table of contents determine the subfunctional group within which

the repair part belongs, i.e., engine, engine assembly, transmission, transmission assembly. This necessary since illustrations are prepared for subfunctional groups, and listings are divided into the same groups.

(2) *Second.* Find the illustration covering the subfunctional group to which the repair part belongs.

(3) *Third.* Identify the repair part on the illustration and note the illustration figure and item number of the repair part.

(4) *Fourth.* Using the Repair Parts Listing, find the subfunctional group to which the repair part belongs and locate the illustration figure and item number noted on the illustration.

b. When Federal stock number or reference number is known:

(1) *First.* Using the index of Federal Stock Numbers and Reference Numbers find the pertinent Federal stock number or reference number. This index is in ascending FSN sequence followed by a list of reference numbers in ascending alphabetic sequence, cross-referenced to the illustration figure number and item number.

(2) *Second.* Using the Repair Part Listing, find the subfunctional group of the repair part and the illustration figure number and item number referenced in the Index of Federal Stock Numbers and Reference Numbers.

6. Abbreviations.

<i>Abbreviations</i>	<i>Explanation</i>
acs	access
actg	actuating
al aly	aluminum alloy
al stl	aluminum steel
aly	alloy
aly stl	alloy steel
amp	amperage
anld	annealed
ar	as required
b	base
brs	brass
brsit	boresight
brz	bronze
cd pld	cadmium plated
chas	chassis
clp	clamp
clr	clear, color
conn	connection
cont	contact, control
cop	copper
cplg	coupling
cprsn	compression
cres	corrosion resistant steel
cs	carbon steel
cstg	casting
ctr	center
ctsk	countersunk

<i>Abbreviations</i>	<i>Explanation</i>
cushd	cushioned
cvx	convex
cyl	cylindrical
diag	diagonal
dr	drive
dwl	dowel
el	elevation
elec	electrical
ext	external
filh	fillister head
fl	flat
flh	flat head
fl intl t	flat internal tooth
fnsh	finish
fp	flat point
grvd	grooved
h	high
hd	head
hdls	headless
hdnd	hardened
hex	hexagon
hex hd	hexagon head
hex soc	hexagon socket
hlcl	helical
hsg	housing
id	inside diameter
ind	indicating
insul	insulation
intl t	internal tooth
irreg	irregular
knrld	knurled
l	long
lg	length
lim	limit
lit	litter
lk	link
lkg	locking
lt	light
ltg	lighting
lvr	lever
max	maximum
met	metal
min	minimum
mt	mount
mtg	mounting
mtlc	metallic
muw	music wire
nch	notched
nom	nominal
nyl	nylon
od	outside
ofs	offset
p	pole
perfd	perforated
peris	periscope
ph brz	phosphor bronze
pl	plain
plstc	plastic
pnh	pan head
pnl	panel
prng	purging
prot	protective
psvt fnsh	passivated finish
pwr	power
qdrnt	quadrant
r	ring
rbr	rubber

<i>Abbreviations</i>	<i>Explanation</i>
r-cl	recoil
ret	recessed
rect	rectangular
rib	ribbed
rtcl	reticle
rtng	retaining
sch	socket head
scr	screw
sft	shaft
sd	single
shld	shield
shldr	shoulder
shp	shape
skt	socket
skt dr	socket drive
sld	slotted
slv	sleeve
sp	split
spcl	special
spec	specification
splnd	splined
spr	spring
sprt	support
sq	square
stl	steel
str	straight
SW	switch
synth	synthetic

<i>Abbreviations</i>	<i>Explanation</i>
t	tooth
term	terminal
thd	thread
thk	thick
tng	tongue
tprd	tapered
vdc	volt, direct current
W	wide
wdg	winding
wht	white
wht nyl jkt	white nylon jacket
wshld	windshield
wtrprf	waterproof
xstr	transistor

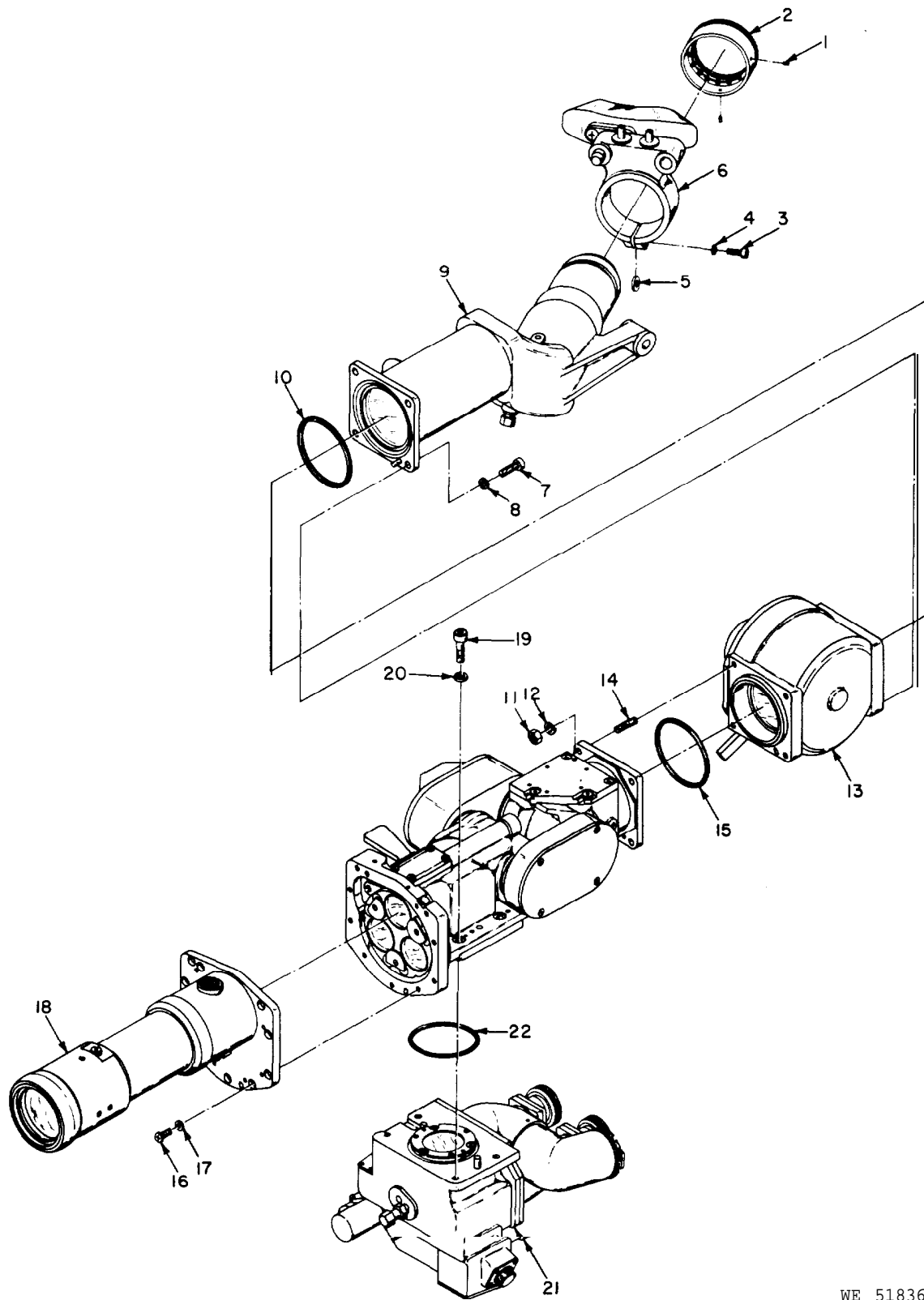
7. Recommendations for Maintenance Publications Improvements.

You can improve this manual by calling attention to errors and by recommending improvements, using DA Form 2028 (Recommended Changes to Publications) or by a letter, and mailing directly to Commanding Officer, Frankford Arsenal, ATTN: AMSWE-MAF-W3100, Philadelphia, Pennsylvania 19137. A reply will be furnished directly to you.

Section II. REPAIR PARTS LIST

Actn Chng Code	(1) SMR CODE	(2) FEDERAL STOCK NUMBER	(3) DESCRIPTION Reference Number & Mfr Code USABLE ON CODE	(4) UNIT OF MEAS	(5) QTY INC IN UNIT	(6) 30-DAY DS MAINT ALLOW			(7) 30-DAY GS MAINT ALLOW			(8) 1-yr aw per 100 Equip Cnctgy	(9) Dep Maint aw per 100 Equip	(10) ILLUST	
						(A) 1- 20	(B) 21- 50	(C) 51- 100	(A) 1- 20	(B) 21- 50	(C) 51- 100			(A) FIG NO	(B) ITM NO
						C	P-O-	5305-531-0137	ARTICULATED TELESCOPE M127 SETSCREW, HEXAGON, SOCKET HEAD CRES, PASS-FNSH, NO. 6-32 UNC-3, 1/8 IN L MS51021-21 (96996)	E A	3			*	*
N	P-O-	1240-012-2951	EYEGUARD MOLDED, 2 IN ID 10549867 (19200)	E A	1	*	*	*	*	*	*	*	1	2	
N	P-O-	5305-988-7608	SCREW, CAP, HEXAGON, SOCKET HEAD CRES, NO. 10-24UNC-3, 1/2 IN L MS16995-36 (96906)	E A	1	*	*	*	*	*	*	*	1	3	
N	P-O-	5310-543-5933	WASHER, LOCK, FLAT INTERNAL TOOTH CRES, PASS-FNSH, NO 10 SCR SIZE MS35333-73 (96996)	E A	1	*	*	*	*	*	*	*	1	4	
N	P-O-	5310-022-1432	WASHER, FLAT CRES, 1/2 IN OD, 7/32 IN ID 221432 (21450) HEADREST AND BRACKET ASSEMBLY 8624562	E A	1	*	*	*	*	*	*	*	1	5	
N	P-D-	5305-958-7667	*SCREW, CAP, HEXAGON SOCKET HEAD CRES, 1/4-28UNF-3,3/4 IN L MS16996-23 (96906)	E A	4							*	1	6	
N	P-D-	5310-933-8121	*WASHER, LOCK-SPRING, HELICAL CRES, PASS FNSH, 1/4 IN SCR SIZE MS35338-139 (96906) EYEPiece ASSEMBLY HOUSING 10553204 AND RELATED PARTS	E A	4							*	1	7	
N	P-D-	5330-470-7511	PACKING, PREFORMED RBR, 2.86 IN ID, 3.06 IN OD 10553177-2 (19200)	E A	1							*	1	8	
N	P-D-	5310-905-1691	*NUT, PLAIN, HEXAGON PASS, FNSH, 1/4-28UNF-2 MS51972-1 (96906)	E A	4							*	1	9	
	X 1 -		WASHER, LOCK, SPRING, HELICAL CRES, PASS FNSH, 1/4 IN SCR SIZE MS35338-149 (96906)		4							*	1	10	
												*	1	11	
												*	1	12	

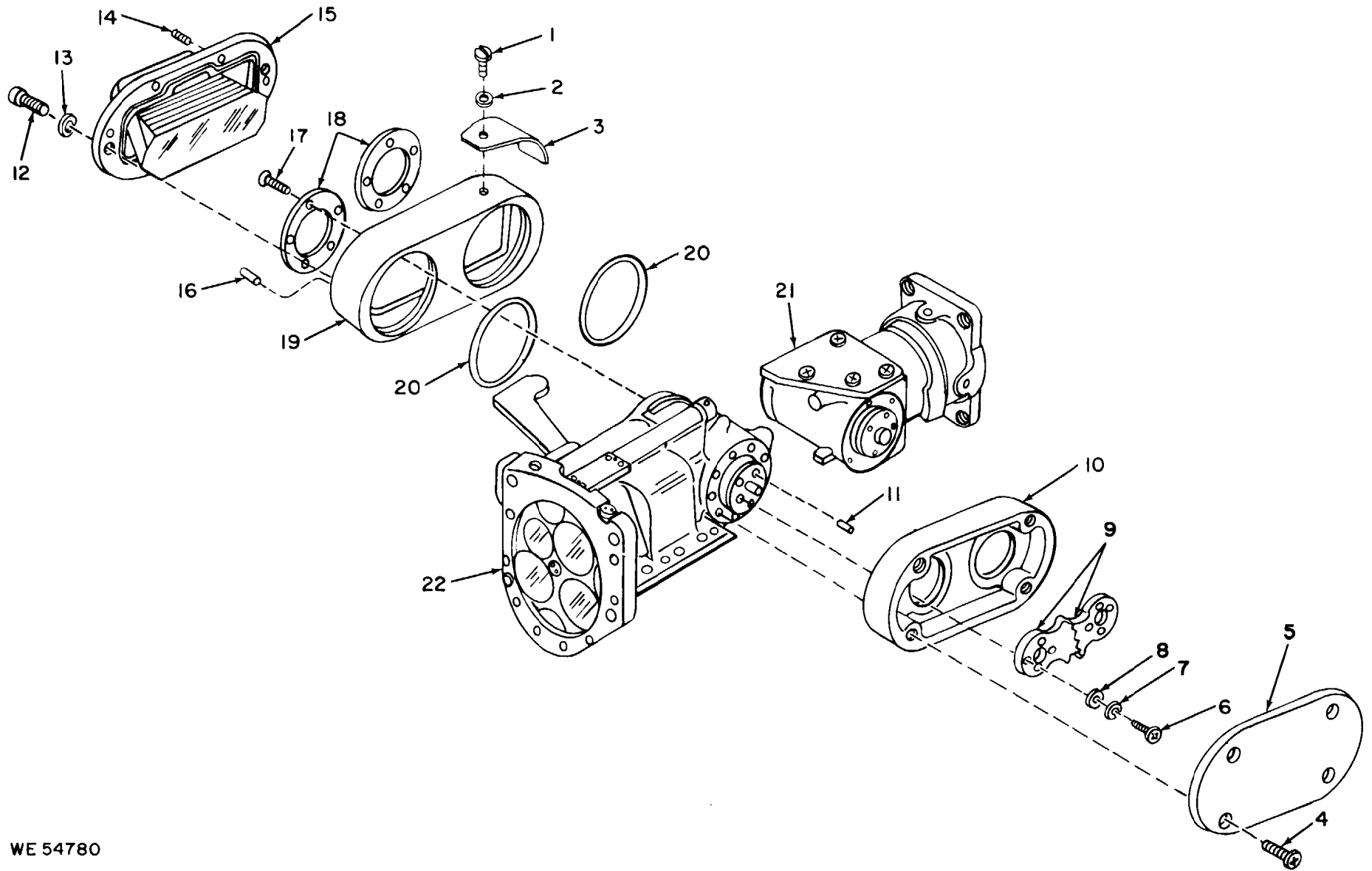
Actn Chng Code	(1) SMR CODE	(2) FEDERAL STOCK NUMBER	(3) DESCRIPTION Reference Number & Mfr Code USABLE ON CODE	(4) UNIT OF MEAS	(5) QTY INC IN UNIT	(6) 30-DAY DS MAINT ALLOW			(7) 30-DAY GS MAINT ALLOW			(8) 1-yr alw per 100 Equip Cnctgy	(9) Dep Maint alw per 100 Equip	(10) ILLUST	
						(A) 1- 20	(B) 21- 50	(C) 51- 100	(A) 1- 20	(B) 21- 50	(C) 51- 100			(A) FIG NO	(B) ITM NO
	X1-		DUAL POWER OPTICAL ASSEMBLY 11739269 (19200)		1									1	13
	X1-		*SETSCREW, HEXAGON SOCKET, FLAT POINT CRES, PSVT FNSH, 1/4-28UNF-3, 1.0 IN I MS18066-69 (96906)		4									1	14
N	P-D-	5330-470-7511	PACKING, PREFORMED RBR, 2.86 IN ID, 3.06 IN OD 10553177-2 (19200)	E A	1							*		1	15
C	P-F-	5305-654-6652	SCREW, MACHINE, PAN HEAD, CRES, PSVT FNSH, NO. 6-32UNC-2, 3/E IN L MS51957-28 (96966)	E A	10	*	*		*	*		*		1	16
c	P-F-	5310-616-3555	WASHER, LOCK, FLAT INTL T, CRES, PSVT FNSH, NO. 6 SCR SIZE MS35333-71 (96906)	E A	10	*	*		*	*		*		1	17
			OBJECTIVE TUBE ASSEMBLY 8624516 AND RELATED PARTS		1									1	18
C	P-H-	5305-685-3492	SCREW, CAP, HEXAGON SOCKET HEAL CRES, 1/4-20UNC-3, 7/8 IN L MS24674-25 (96906)	E A	4				*	*		*		1	19
C	P-H-	5316-543-2740	WASHER, LOCK, FLAT CRES, PSVT FNSH, 1/4 IN SCR SIZE MS35333-74 (96906)	E A	4				*	*		*			20
	X1-		RETICLE PROJECTOR ASSEMBLY 8624501 (19200)		1										21
C	P-H-	5330-912-2657	PACKING, PREFORMED RBR, 2.48 IN ID, 0.103 IN THK 8624711-2 (19200) *COMPONENT OF DUAL POWER OPTICAL ASSEMBLY 11739269	E A	1				*	*		*			22



WE 51836A

Figure 1. Articulated telescope M127 (10553175)--Partial exploded view.

C	P-H-	5305-701-5059	SCREW, MACHINE, PAN HEAD, CROSS RECESSED CRES, PSVT FN SH, NO. 8-46UNF-2, 3/8 IN L MS51958-43 (96906)	E A	6				*	*	*		*	2	12
N	P-H-	5310-933-8119	WASHER, LOCK, SPLIT, HELICAL CRES, PSVT FN SH, NO. 8 SCR SIZE MS35338-137 (96906)	E A	6				*	*	*		*	2	13
	X 1 -		SETSCREW, HEXAGON SOCKET, FLAT POINT ALY STL, CD PLD NO. 8-32UNF-3, 1/8 IN L MS51965-27 (96906)		4									2	14
C	P-D-	1240-944-7687	PRISM, OPTICAL INSTRUMENT 8624515 (19200)	E A	1								*	2	15
	X - 1 -		PIN, STRAIGHT, HEADLESS DWL, CRES, 3/32 ID DIA, 1/2 IN L MS16555620 (96906)		2									2	16
C	P-F-	5305-054-6651	SCREW, MACHINE, PAN HEAD CROSS REC, CRES, PSVT FN SH, PNH NO. 6-32UNC-2,5/16 IN L MS51957-27 (96966)	E A	10	*	*	*	*	*	*		*	2	17
	X 1 -		WASHER, THRUST CRES, 5 CTSK HOLES, 2.0 IN ID, 2.68 IN OD 8624622 (19200)		2									2	18
	X - 1		HOUSING 8624538 (19200)		1									2	19
C	P-H-	5330-912-2664	PACKING, PREFORMED RBR, 2.487 IN ID, 0.103 IN THK 8624710-2 (19200)	E A	2				*	*	*		*	2	20
			PORRO PRISM HOUSING 10553200 AND RELATED PARTS	A										2	21
			PORRO PRISM HOUSING 8624716 AND RELATED PARTS	B										2	21
			FILTER HOUSING 8624715 AND RELATED PARTS											2	22

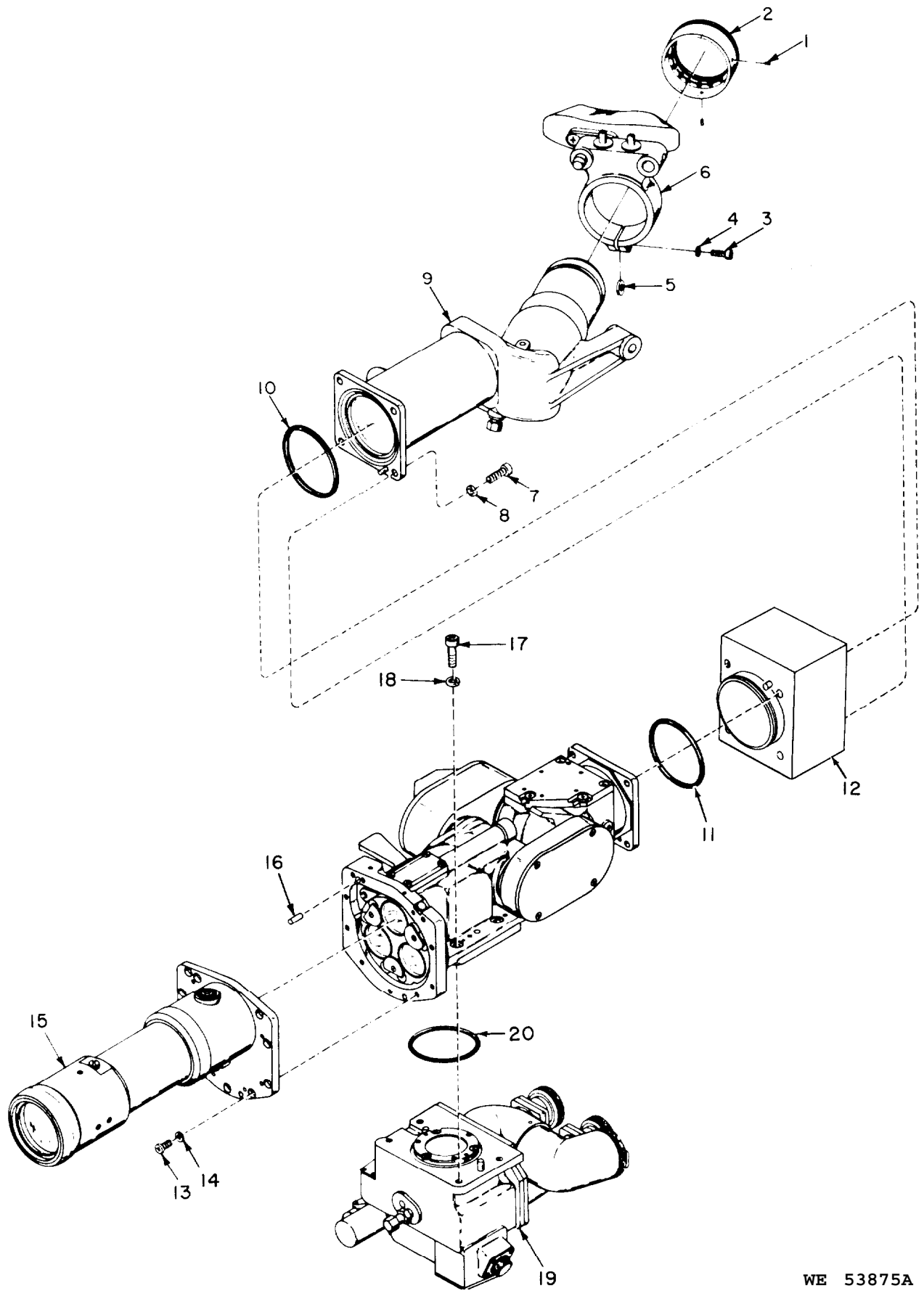


WE 54780

Figure 2. Articulated telescope M127 (10553175) and M119 (8624500)—exploded view of major assemblies.

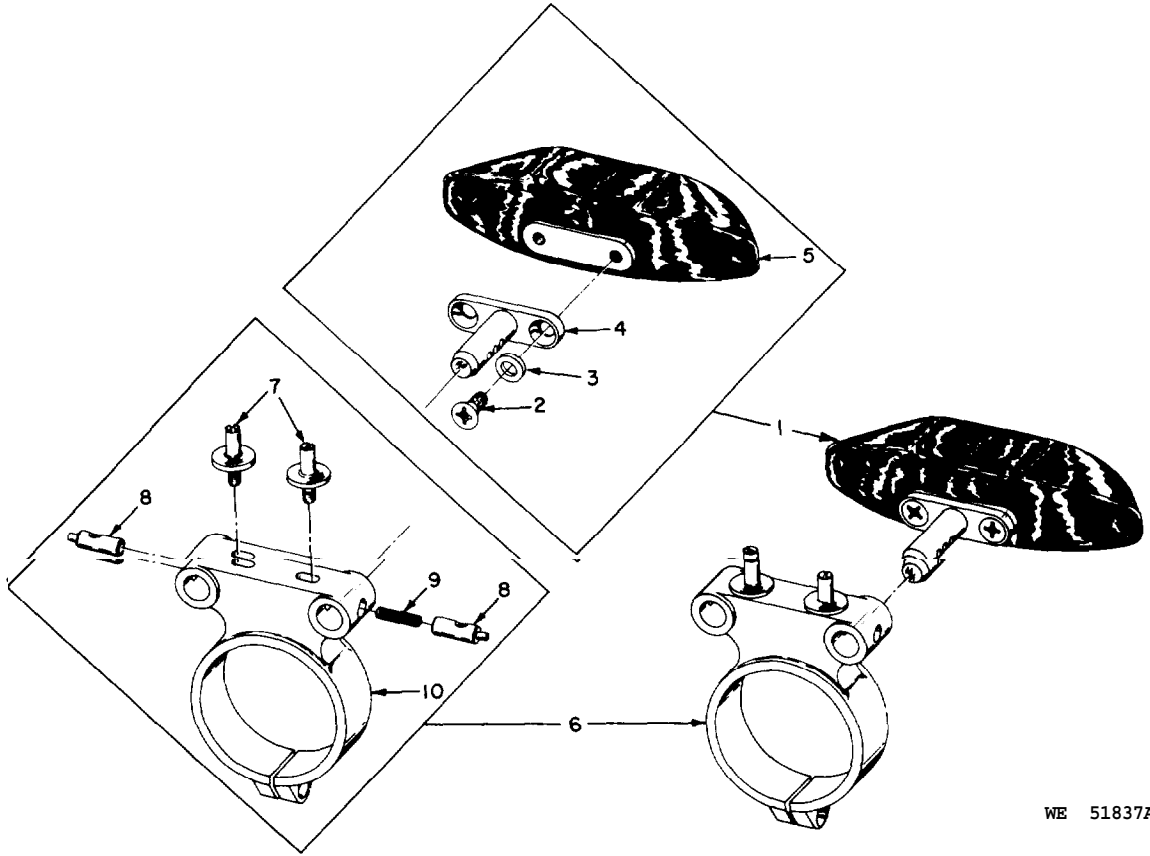
Actn Chng Code	(1) SMR CODE	(2) FEDERAL STOCK NUMBER	(3) DESCRIPTION Reference Number & Mfr Code USABLE ON CODE		(5) QTY INC IN UNIT	(6) 30-DAY DS MAINT ALLOW			(7) 30-DAY GS MAINT ALLOW			(8) 1-yr alw per 100 Equip Cntry	(9) Dep Maint alw per 100 Equip	(10) ILLUST	
						(A) 1- 20	(B) 21- 50	(C) 51- 100	(A) 1- 20	(B) 21- 50	(C) 51- 100			(A) FIG NO	(B) TM NO
C	P-O-	5305-531-0137	ARTICULATED TELESCOPE M119 SETSCREW, HEXAGON SOCKET, CUP POINT CRES, PSVT FNSH, NO. 6-32UNC-3, 1/8 IN L MS51021-21 (96906)	EA	3		*	*		*	*		*	3	1
N	P-O-	1240-012-2951	EYEGUARD MOLDED, 2 IN VIEWING DIA 16549867 (19200)	EA	1	*	*	*	*	*	*		*	3	2
N	P-O-	5305-988-7608	SCREW, CAP, HEXAGON SOCKET HEAD CRES, NO. 10-24UNC-3, 1/2 IN L MS16995-36 (96906)	EA	1	*	*	*	*	*	*		*	3	3
N	P-O-	5310-543-5933	WASHER, LOCK, FLAT INTL T, CRES, PSVT FNSH, NO. 10 SCR SIZE MS35333-73 (96906)	EA	1	*	*	*	*	*	*		*	3	4
N	P-O-	5310-022-1432	WASHER, FLAT CRES, 7/32 IN ID, 1/2 IN OD 221432 (21450) HEADREST AND BRACKET ASSEMBLY 8624562	EA	1	*	*	*	*	*	*		*	3	5
N	P-D-	5305-702-9070	SCREW, CAP, HEXAGON HEAD CRES, PSVT FNSH, 1/4-20 UNC-2, 3 IN L MS35307-318 (96906)	EA	4				*		*		*	3	6
C	P-H-	5310-543-2740	WASHER, LOCK, FLAT INTL T, CRES, PSVT FNSH, 1/4 IN SCR SIZE MS35333-74 (96906) EYEPiece HOUSING 8624504 AND RELATED PARTS	EA	4				*		*		*	3	7
C	P-H-	5330-912-2663	PACKING, PREFORMED RBR, 2.675 IN ID, 0.103 IN THK 8624710-4 (19200)	EA	2				*		*		*	3	8
C	P-H-	5330-9122663	PACKING, PREFORMED 8624710-4 (19200)	EA	1				*		*		*	3	9
	X 1 -		SHUTTER DUMMY 8624526 (19200)	EA	1								*	3	10
													*	3	11
													*	3	12

Actn Chng Code	(1) SMR CODE	(2) FEDERAL STOCK NUMBER	(3) DESCRIPTION Reference Number & Mfr Code USABLE ON CODE	(4) UNIT OF MEAS	(5) QTY INC IN UNIT	(6) 30-DAY DS			(7) 30-DAY GS			(8) Yr 100 Equip Integy	(9) Dep 100 Equip	(10) ILLUST		
						MAINT		ALLOW	MAINT		ALLOW			(A) FIG NO	(B) ITM NO	
						(A) 1- 20	(B) 21- 50	(C) 51- 100	(A) 1- 20	(B) 21- 50	(C) 51- 100					
C	P-H-	5305-054-6655	SCREW, MACHINE PAN HEAD, CROSS RECESSED CRES, PSVT FNSH, NO. 6-32UNC-2, 5/8 IN L MS51957-31 (96906)	EA	10				*	*	*		*	3	13	
C	P-F-	5310-616-3555	WASHER, LOCK, FLAT INTL T, CRES, PSVT FNSH, NO. 6 SCR SIZE MS35333-71 (96906)	EA	10	*	*	*	*	*	*		*	3	14	
			OBJECTIVE TUBE ASSEMBLY 8624516 AND RELATED PARTS		1									3	15	
	X 1 -		PIN, STRAIGHT, HEADLESS DWL, CRES. 3/16 IN DIA, 5/8 IN L MS1655-641 (96906)		1									3	16	
C	P-H-	5305-6885-3492	SCREW, CAP, HEXAGON SOCKET HEAD CRES, 1/4-20UNC--3, 7/8 IN L MS24674-25 (96906)	EA	4				*	*	*		*	3	17	
C	P-H-	5310-543-2740	WASHER, LOCK, FLAT INTL T, CRES, PSVT FNSH, 1/4 IN SCR SIZE MS35333-74 (96906)	EA	4				*	*	*		*	3	18	
	X 1 -		RETICLE PROJECTOR ASSEMBLY 8624501 (19200)		1									3	19	
C	P-H-	5330-912-2657	PACKING, PREFORMED RBR, 2.487 IN ID, 0.103 IN THK 8624711-2 (19200)	EA	1					*			*	3	20	



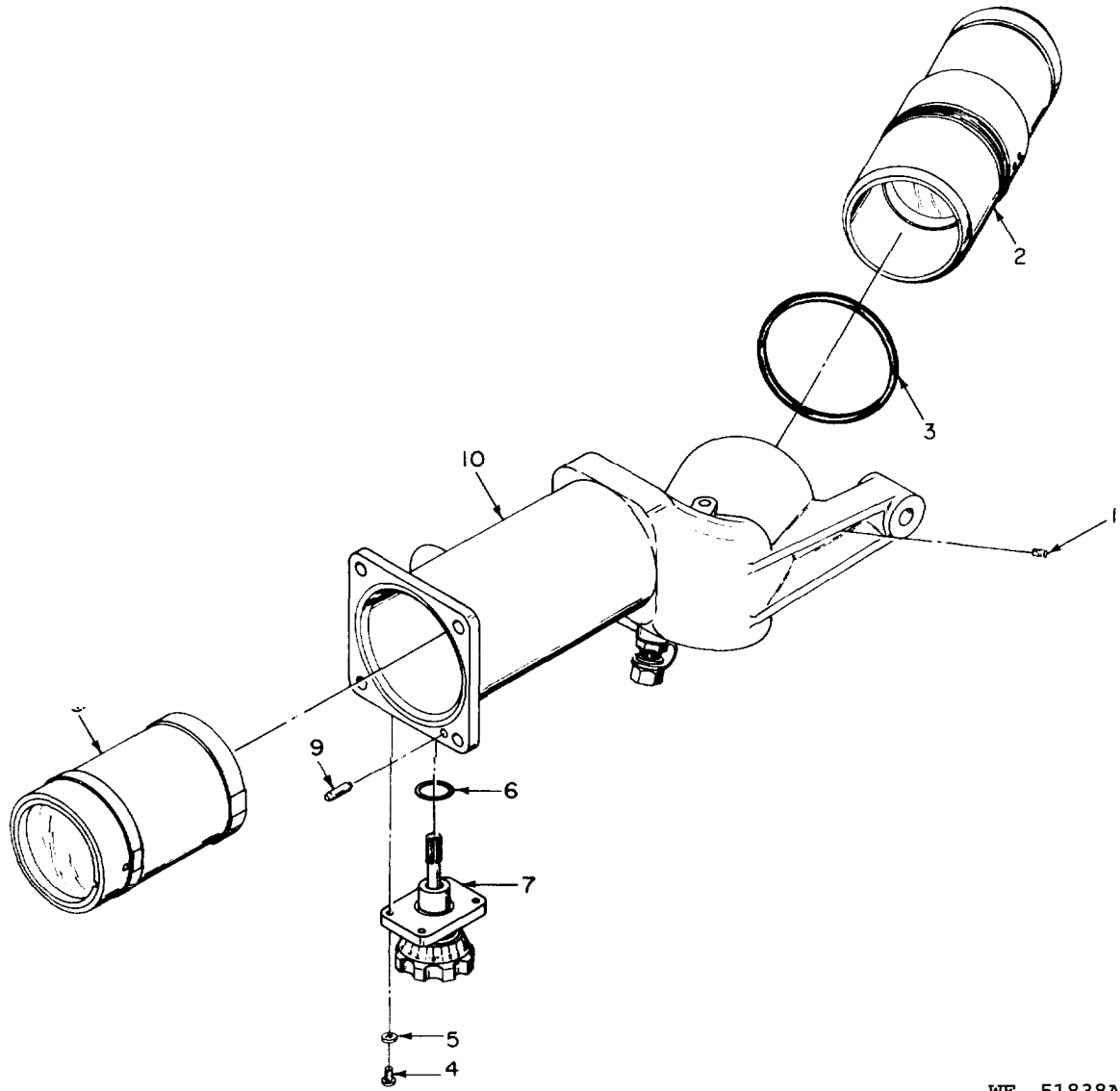
WE 53875A

Figure 3. Articulated telescope M119 (8624500)-partial exploded view.



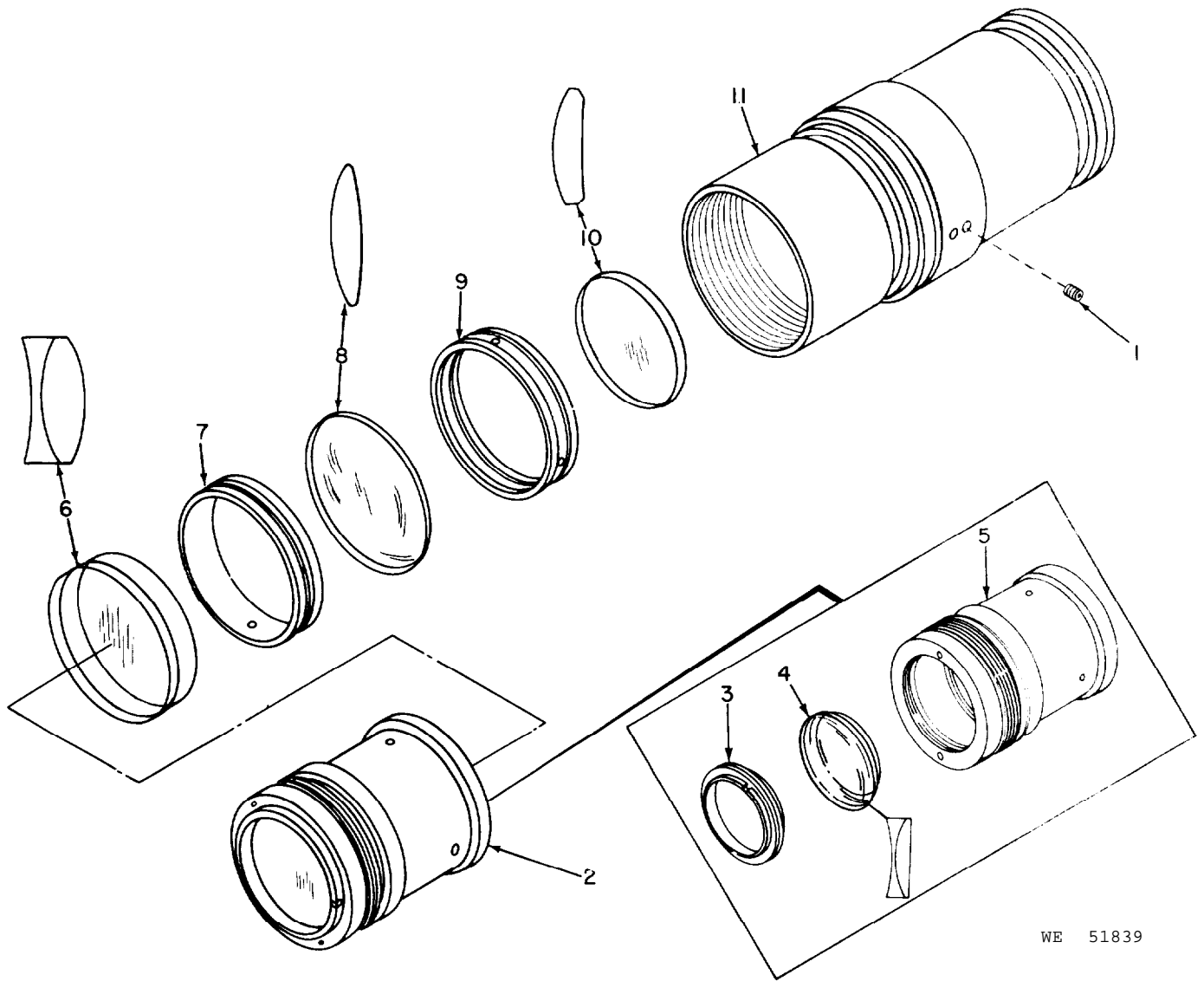
WE 51837A

Figure 4. Headrest and bracket assembly 8624562-exploded view.



WE 51838A

Figure 5. Eyepiece housing assembly 10553204 and 8624504--partial exploded view.

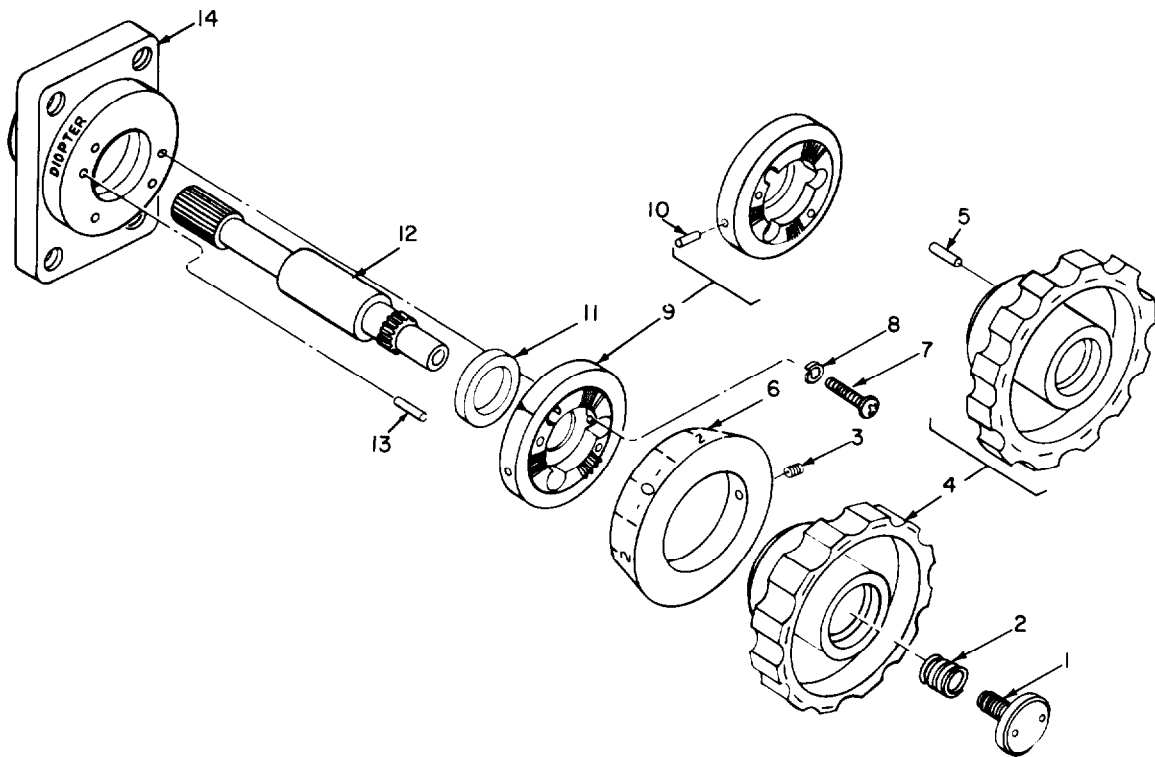


WE 51839

Figure 6. Eyepiece assembly 8624553--exploded view.

Actn Chng Code	(1) SMR CODE	(2) FEDERAL STOCK NUMBER	(3) DESCRIPTION Reference Number & Mfr Code USABLE ON CODE	(4) UNIT OF MEAS	(5) QTY INC IN UNIT	(6) 30-DAY DS			(7) 30-DAY GS			(8) 1-yr alw per 100 Equip Cntegy	(9) Dep Maint alw per 100 Equip	(10) ILLUST		
						MAINT	ALLOW		MAINT	ALLOW				(A) FIG NO	(B) ITM NO	
						(A) 1- 20	(B) 21- 50	(C) 51- 100	(A) 1- 20	(B) 21- 50	(C) 51- 100					
			DIOPTER KNOB ASSEMBLY													
C	P-F-	5305-625-3612	SCREW, SPECIAL CRES, NO. 6-40UNF-2, 15/32 IN L 8590832 (19200)	EA	1	*	*	*	*	*	*	*	*	7	1	
C	P-F-	5340-582-4075	SPRING, COMPRESSION MUW, 0.54 IN FREE L, 5 COILS 8590833 (19200)	EA	1	*	*	*	*	*	*	*	*	7	2	
N	P-F-	5305-655-9246	SETSCREW, HEXAGON SOCKET, CUP POINT CRES, PSVT FNSH, NO. 4-40UNC-3, 3/16 IN L MS51021-10 (96906)	EA	2	*	*	*	*	*	*	*	*	7	3	
N	P-F-	5355-930-6806	KNOB 8624520 (19200)	EA	1	*	*	*	*	*	*	*	*	7	4	
	X 1 -		PIN, STRAIGHT, HEADLESS DWL, CRES, 3/32 IN DIA, 5/16 IN L MS16555-617 (96906)		2									7	5	
N	P-F-	5355-930-6799	DIAL, SCALE 8624531 (19200)	EA	1	*	*	*	*	*	*	*	*	7	6	
N	P-F-	5305-054-5638	SCREW, MACHINE, PAN HEAD, CROSS RECESSED CRES, PSVT FNSH, NO. 2-56UNC-2, 5/16 IN L MS51957-4 (96906)	EA	3	*	*	*	*	*	*	*	*	7	7	
N	P-F-	5310-928-2690	WASHER, LOCK, SPRING, HELICAL CRES, NO. 2 SCR SIZE MS35338-134 (96906)	EA	3	*	*	*	*	*	*	*	*	7	8	
N	P-D-	1240-045-4353	CLUTCH, HALF POSITIVE CRES, 1.125 IN DIA, 0.219 IN H, (ENGRAVED) 8624617-2(19200)	EA	1								*	7		
	X 1 -		'IN, STRAIGHT, HEADLESS CRES, 1/16 IN DIA, 1/4 IN L MS16555-602 (96906)		1									7		
C	P-F-	330-990-8979	PACKING, PREFORMED RBR, 0.424 IN ID, 0.103 IN THK 619853 (19200)	EA	1	*	*	*	*	*	*	*	*	7		
	X 1 -		ADAPTER 8624530 (19200)		1									7		

X 1 -	PIN, STRAIGHT, HEADLESS CRES, 3/32 IN DIA, 3/8 IN L MS16555-618 (96906)	2											7	13
X 1 -	HOUSING 8624529 (19200)	1											7	14

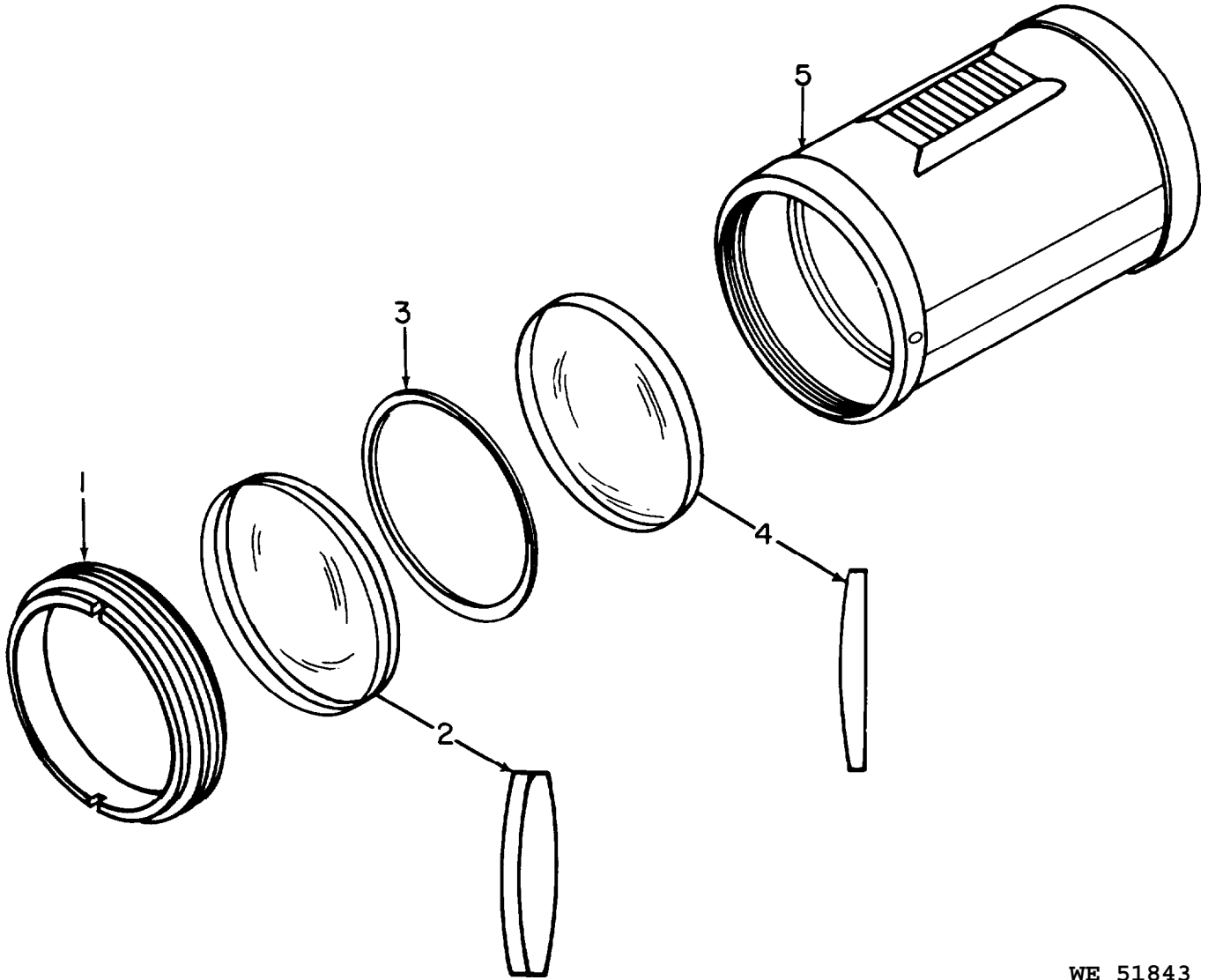


WE 51842A

Figure 7. Diopter knob assembly 8624555-exploded view.

Actn
Chng
Code

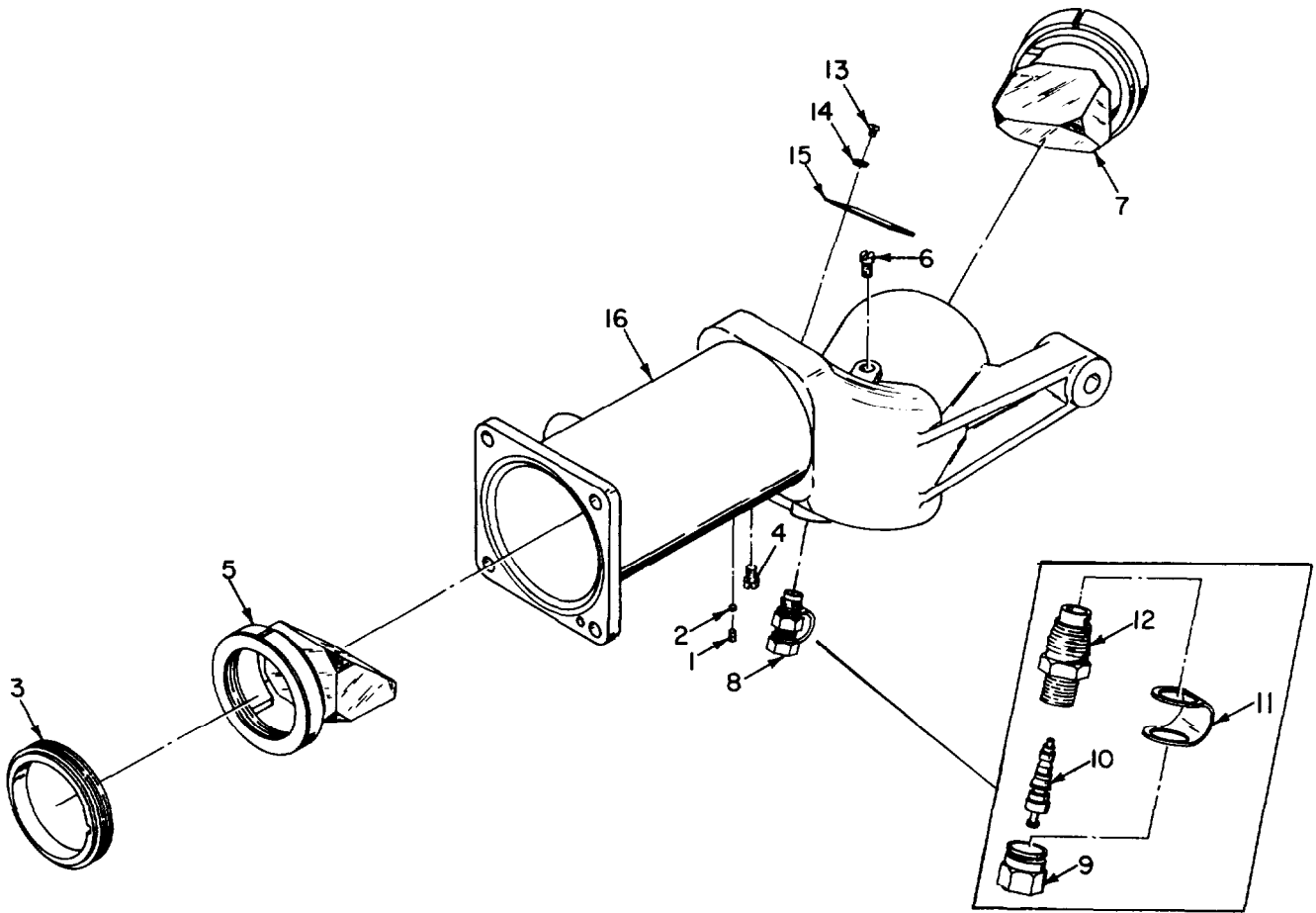
(1) SMR CODE	(2) FEDERAL STOCK NUMBER	(3) DESCRIPTION Reference Number & Mfr Code USABLE ON CODE	(4) UNIT OF MEAS	(5) QTY INC IN UNIT	(6) 30-DAY DS MAINT ALLOW			(7) 30-DAY GS MAINT ALLOW			(8) 1-yr slw per 100 Equip Cntegy	(9) Dep Maint slw per 100 Equip	(10) ILLUST	
					(A)	(B)	(C)	(A)	(B)	(C)			(A) FIG NO	(B) ITM NO
					1- 20	21- 50	51- 100	1- 20	21- 50	51- 100				
		CELL ASSEMBLY												
X 1 -		RETAINER, OPTICAL ELEMENT AL ALY, 2-13/32 UNS-2 IN OD 8624667 (19200)		1									8	1
X 1 -		LENS, OPTICAL INSTRUMENT 8624660 (19200)		1									8	2
X 1 -		SPACER, OPTICAL ELEMENT AL ALY, 2.350 IN OD, 0.076 IN THK 8624663 (19200)		1									8	3
X 1 -		LENS, OPTICAL INSTRUMENT 8624661 (19200)		1									8	4
X 1 -		CELL, OPTICAL ELEMENT 10553201(19200)		1									8	5
X 1 -		CELL, OPTICAL ELEMENT 8624532 (19200)		1									8	5



WE 51843

Figure 8. Cell assembly 10553190 and 8624556-exploded view,

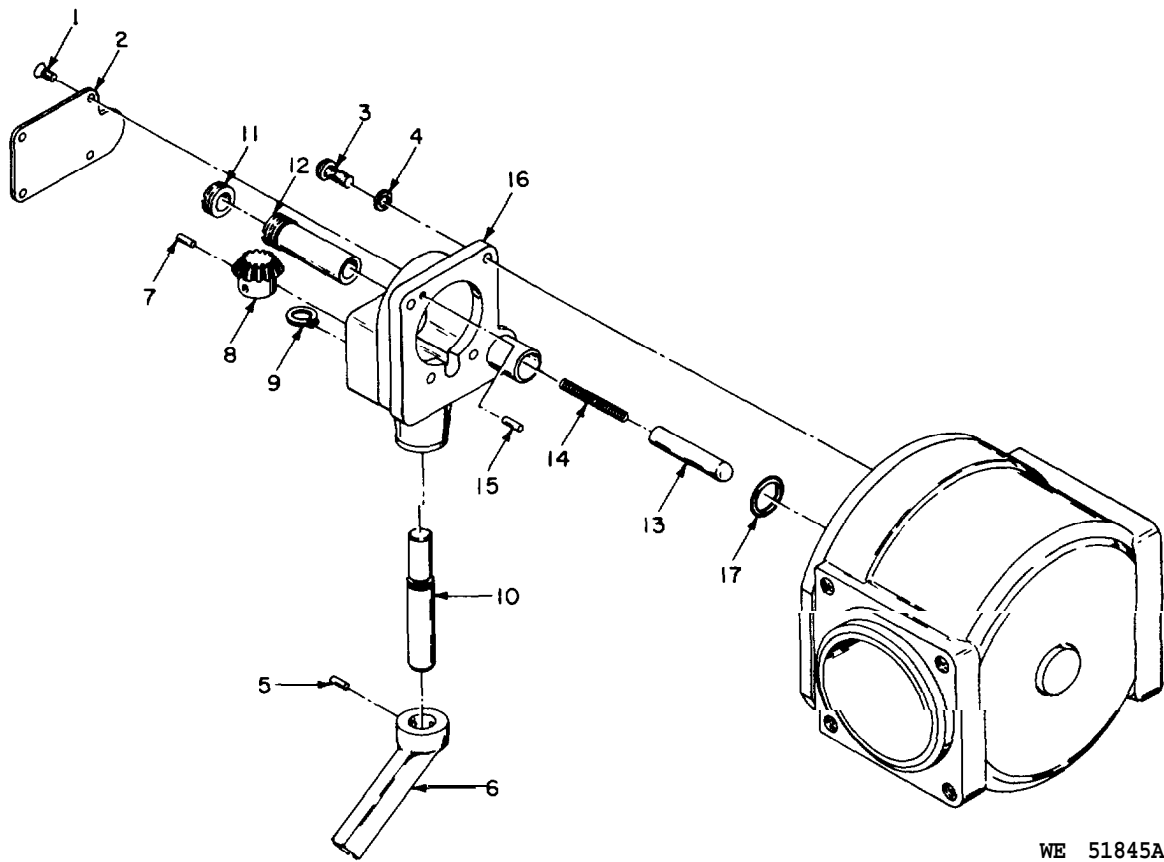
Actn Chng Code	(1) SMR CODE	(2) FEDERAL STOCK NUMBER	(3) DESCRIPTION Reference Number & Mfr Code USABLE ON CODE	(4) UNIT OF MEAS	(5) QTY INC IN UNIT	(6) 30-DAY DS MAINT ALLOW			(7) 30-DAY GS MAINT ALLOW			(8) 1-yr alw per 100 Equip Cntegy	(9) Dep Maint alw per 100 Equip	(10) ILLUST		
						(A) 1- 20	(B) 21- 50	(C) 51- 100	(A) 1- 20	(B) 21- 50	(C) 51- 100			(A) FIG NO	(B) ITM NO	
			EYEPIECE HOUSING													
C	P-D-	5305-272-4123	SETSCREW, HEXAGON SOCKET, CUP POINT CRES, PSVT FNSH, NO. 6-32UNC-3, 1/4 IN L MS51021-23 (96903)	E A	1								*	9	1	
C	P-D-	1220-087-2729	SEAT NYL, 0.093 IN DIA, 3/64 IN THK 8619986 (19200)	E A	1								*	9	2	
	X 1 -		RETAINER, OPTICAL ELEMENT AL ALY, 2.600-32NS-2,0.32 IN THK 8624620 (19200)		1									9	3	
N	P-D-	5305-956-2604	SETSCREW SPECIAL CRES, SLTD, 1/4-20UNC-2, 3/8 IN L 8624619 (19200)	E A	2								*	9	4	
N	P-D-	1240-949-8652	PRISM BONDED 8624558 (19200)	E A	2								*	9	5	
N	P-D-	5305-956-2604	SETSCREW, SPECIAL CRES, SLTD, 1/4-20UNC-2,3/8 IN L 8624619 (19200)	E A	1								*	9	6	
N	P-D-	1240-949-8652	PRISM BONDED 8624558 (19200)	E A	1								*	9	7	
			PURGING AND CHARGING VALVE ASSEMBLY											9	8	
N	P-F-	2640-507-9260	CAP, AIR VALVE 820005 (19200)	E A	1	*	*	*	*	*	*		*	9	9	
N	P-F-	2640-060-3543	VALVE, AIR CHECK MS51377-2 (96906)	E A	1	*	*	*	*	*	*		*	9	10	
N	P-F-	1240-464-4792	STRAP 10516567 (19200)	E A	1	*	*	*	*	*	*		*	9	11	
N	P-F-	2640-114-1096	STEM, VALVE MS51607-1 (96906)	E A	1	*	*	*	*	*	*		*	9	12	
	X 1 -		SCREW, MACHINE PAN HEAD, CROSS RECESSED CRES, PSVT FNSH, NO. 2-56UNC-2, 1/8 IN L MS51957-1 (96906)		2									9	13	



WE 51844

Figure 9. Eyepiece housing 10553204 and 8624504 with related parts-exploded view.

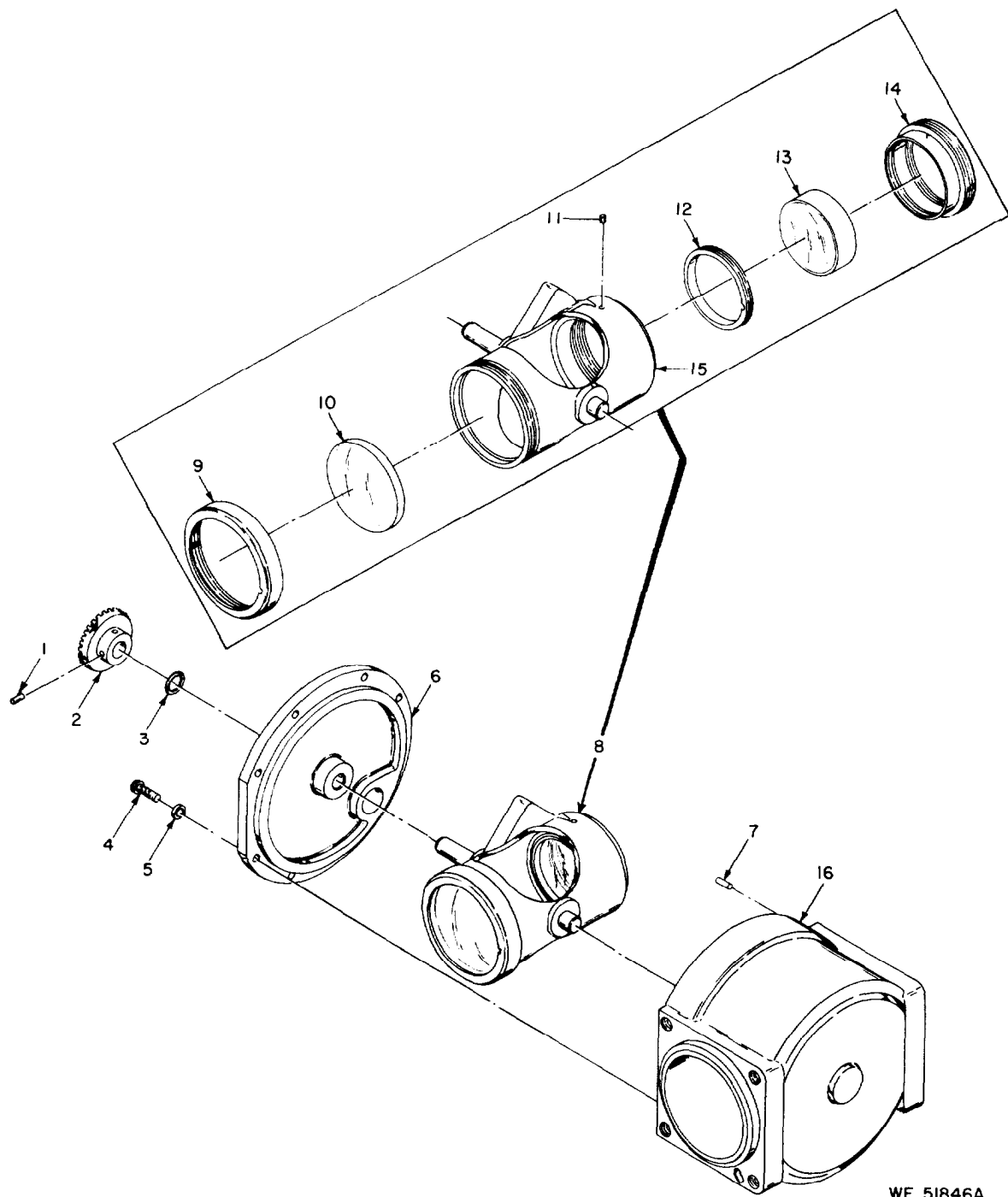
	X 1 -		PLUNGER CRES, 0.312 IN DIA, 1-5/8 IN L 10553180 (19200)	A		1												10	13
N	P-D-	5360-230-1829	SPRING, HELICAL COMPRESSION CRES, 1.750 IN FREE L, 16 COILS 10553188 (19200)	A	E A	1								*				10	14
	X 1 -		PIN, STRAIGHT, HEADLESS DWL, CRES, 3/32 IN DIA, 3/4 IN L MS16555-623 (96906)	A		1												10	15
	X 1 -		HOUSING 10553185 (19200)	A		1												10	16
N	P-D-	5330-912-2661	PACKING, PREFORMED RBR, 0.816 IN OD, 0.070 IN THK 10553197 (19200)	A	E A	1								*				10	17



WE 51845A

Figure 10. Housing 10553185 with related parts-partial exploded view.

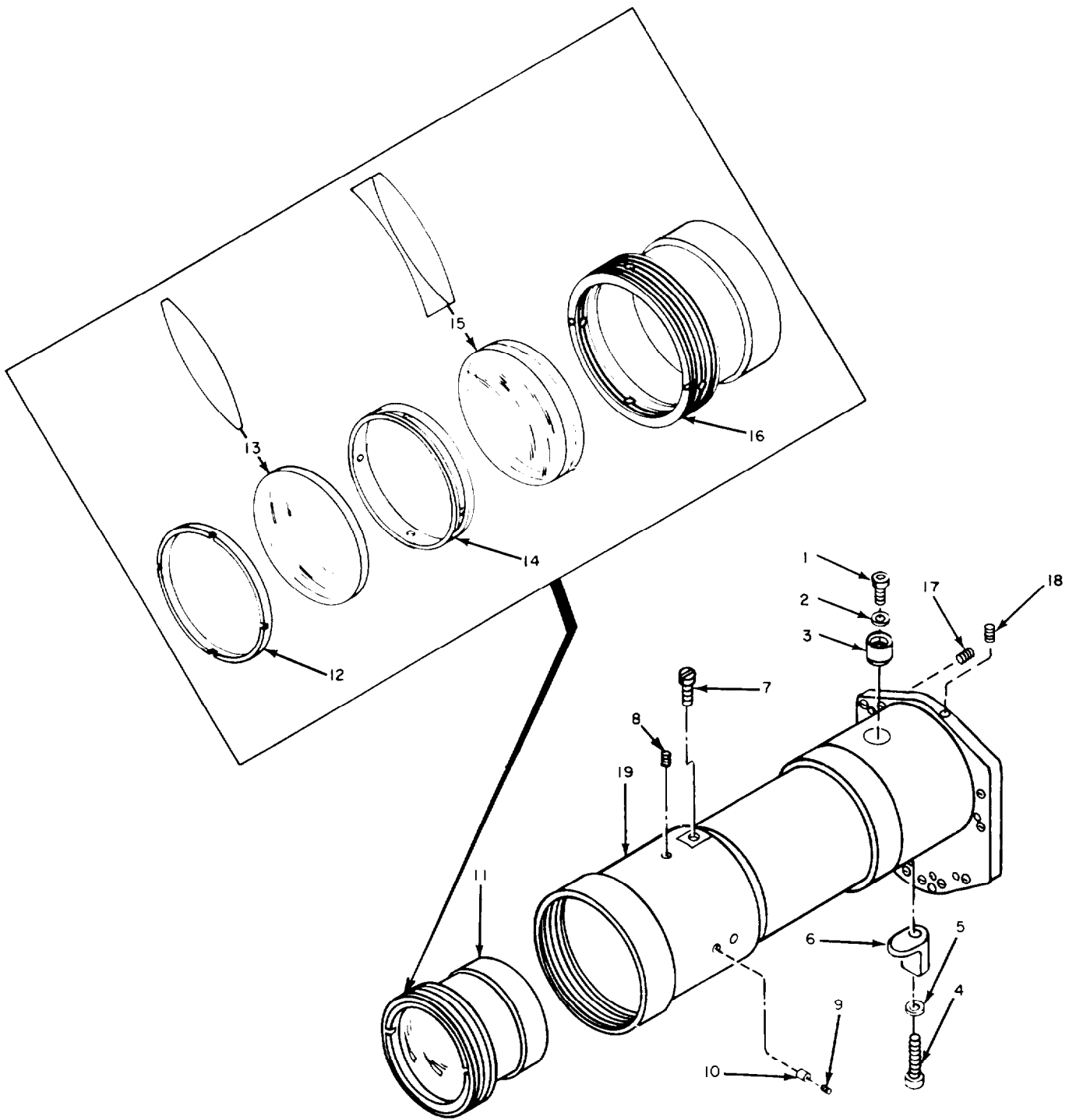
Actn Chng Code	(1)	(2)	(3)	(4)	(5)	(6)			(7)			(8)	(9)	(10)		
	SMR CODE	FEDERAL STOCK NUMBER	DESCRIPTION Reference Number & Mfr Code	UNIT OF MEAS	QTY INC IN UNIT	30-DAY DS MAINT ALLOW			30-DAY GS MAINT ALLOW			1-yr alw per 100 Equip Cncty	Dep Maint alw per 100 Equip	ILLUST		
						(A) 1- 20	(B) 21- 50	(C) 51- 100	(A) 1- 20	(B) 21- 50	(C) 51- 100			(A) FIG NO	(B) ITM NO	
			CELL ASSEMBLY													
			PIN, STRAIGHT, HEADLESS DWL, CRES, 3/32 IN DIA, 5/8 IN L MS16555-622 (96906)	A	1										11	1
			GEAR, BEVEL CRES, 48 T 10553193 (19200)	A	1										11	2
		5330-470-7510	PACKING, PREFORMED RBR, 0.567 IN OD, 0.103 IN THK 10553177-1 (19200)	E A	1								*		11	3
		5305-050-9230	SCREW, MACHINE PAN HEAD, CROSS RECESSED CRES, PSVT FNSH, NO. 10-24UNC-2, 5/8 IN L MS51957-64 (96906)	E A	8								*		11	4
		5310-933-8120	WASHER, LOCK, SPRING, HELICAL CRES, PSVT FNSH, 1.0 IN SCR SIZE MS35338-138 (96906)	E A	8								*		11	5
			COVER 10553209 (19200)	A	1										11	6
			PIN, STRAIGHT, HEADLESS DWL, CRES, 1/8 IN DIA, 1/2 IN L MS16555-627 (96906)	A	1										11	7
		1240-553-7955	CELL ASSEMBLY 10553202 (19200)	E A	1								*		11	8
			RETAINER, OPTICAL ELEMENT AL ALY, SLTD, 2-7/16-32UNS-2 IN ID, 0.375 IN THK 10553184 (19200)	A	1										11	9
			LENS, OPTICAL ELEMENT 10553181 (19200)	A	1										11	10
			SETSCREW, HEXAGON SOCKET, FLAT POINT CRES, PSVT FNSH, NO. 6-40UNF-3, 3/16 IN L MS51031-25 (96906)	A	1										11	11
			RETAINER, OPTICAL ELEMENT AL ALY, SLTD, 2.0-32UNC-2 IN OD, 0.19 IN THK 10553183 (19200)	A	1										11	12



WE 51846A

Figure 11. Cell assembly 1055202 with related parts-exploded view.

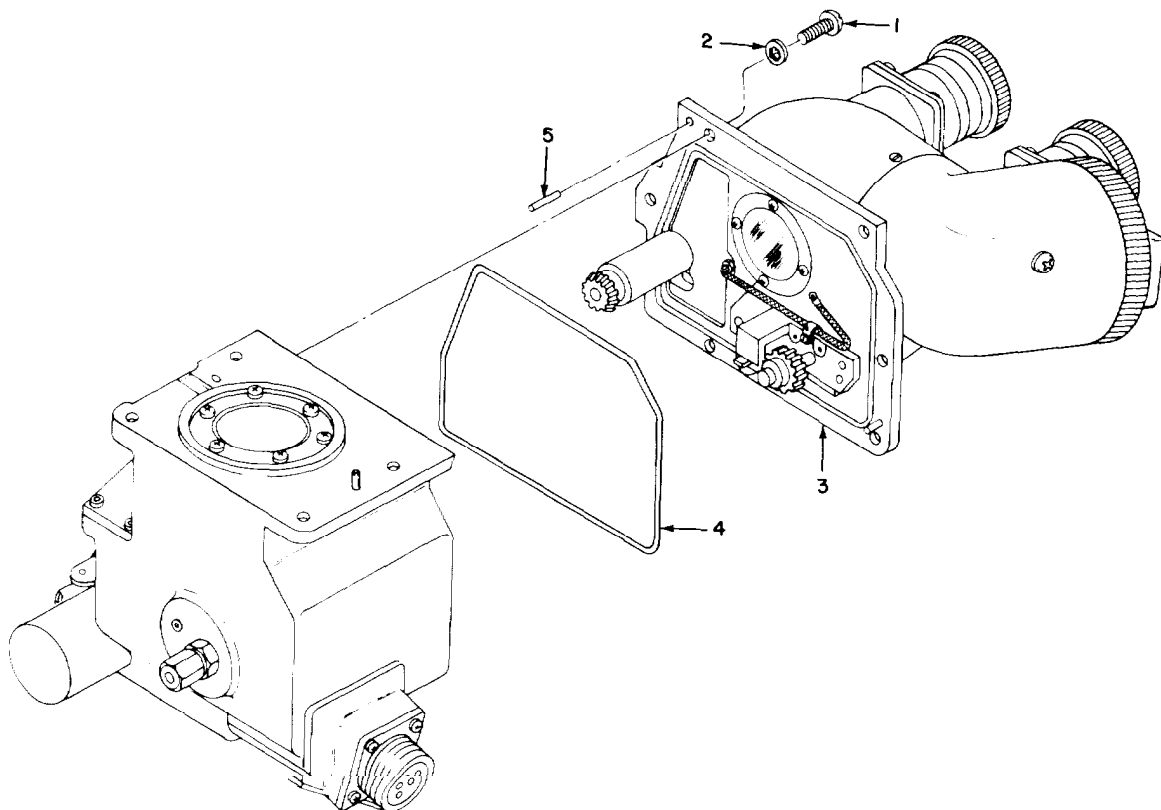
X 1 -	LENS, OPTICAL INSTRUMENT 8624670 (19200)									12	13
X 1 -	SPACER, OPTICAL ELEMENT 8624671 (19200)	1								12	14
X 1 -	LENS, OPTICAL INSTRUMENT 8624669 (19200)	1								12	15
X 1 -	CELL, OPTICAL ELEMENT 8624597 (19200)	1								12	16
X 1 -	SETSCREW, HEXAGON SOCKET HEAD FLAT POINT AL ALY, CD PLD, NO. 8-32UNC-3, 1/8 IN L MS51965-27 (96906)	7								12	17
X 1 -	SETSCREW, HEXAGON SOCKET HEAD FLAT POINT AL ALY, CD PLD, NO. 8-32UNC-3, 1/8 IN L MS51965-27 (96906)	1								12	18
X 1 -	TUBE ASSEMBLY 8624516 (19200) *COMPONENT OF TUBE ASSEMBLY 8624516	1								12	19



WE 51847A

Figure 12. Objective tube assembly 8624559 with related parts - exploded view.

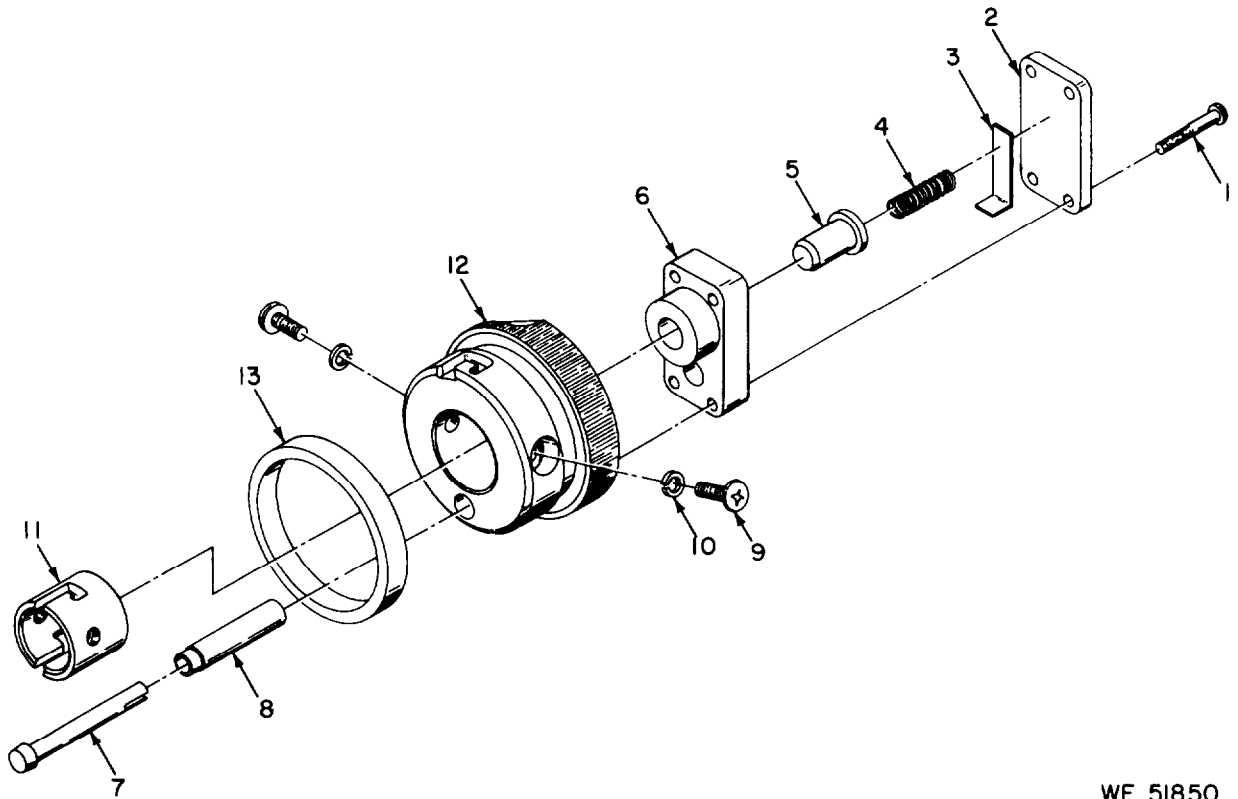
Actn Chng Code	(1) SMR CODE	(2) FEDERAL STOCK NUMBER	(3) DESCRIPTION Reference Number & Mfr Code USABLE ON CODE	(4) UNIT OF MEAS	(5) QTY INC IN UNIT	(6) 30-DAY DS MAINT ALLOW			(7) 30-DAY GS MAINT ALLOW			(8) 1-yr slw per 100 Equip Cntry	(9) Dep Maint slw per 100 Equip	(10) ILLUST	
						(A) 1- 20	(B) 21- 50	(C) 51- 100	(A) 1- 20	(B) 21- 50	(C) 51- 100			(A) FIG NO	(B) ITM NO
						N	P-D-	5305-054-6670	RETICLE PROJECTOR SCREW, MACHINE PAN HEAD, CROSS RECESSED CRES, PSVT FNSH, NO. 8-32UNC-2, 1/2 IN L MS51957-45 (96906)	E A	6				
C	P-H-	5310-543-2739	WASHER, LOCK, FLAT INTL T, CRES, PSVT FNSH, NO. 8 SCR SIZE MS35333-72 (96906)	E A	6				*	*	*	*	13	2	
	X 1 -		HOUSING ASSEMBLY 8624502 (19200)		1								13	3	
C	P-H-	5330-912-2659	PACKING, PREFORMED RBR, 3.875 IN ID, 0.103 IN THK 8624710-5 (19200)	E A	1				*	*	*	*	13	4	
	X 1 -		PIN, STRAIGHT, HEADLESS DWL, CRES, 1/8 IN DIA, 5/8 IN L MS1655-627(96906)		2								13	5	



WE 51848A

Figure 13. Reticle projector 8624501--partial exploded view.

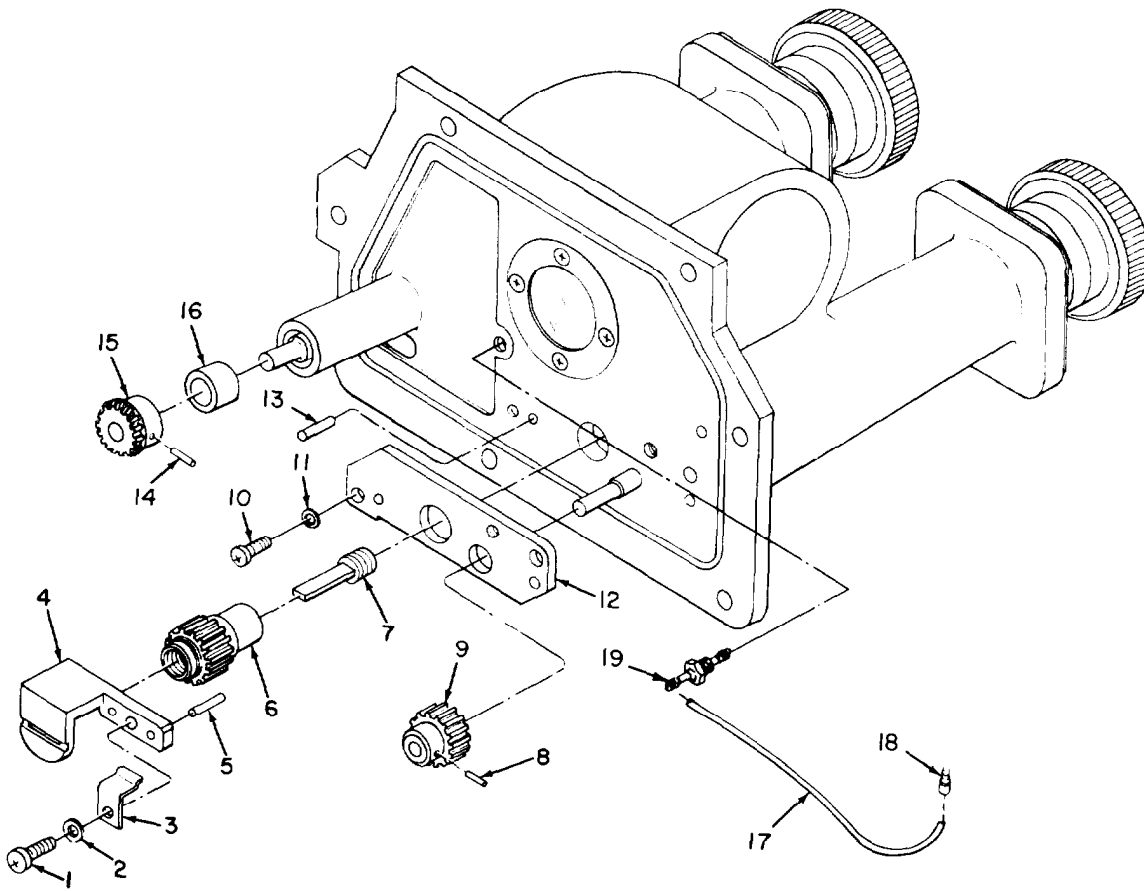
Actn Chng Code	(1)	(2)	(3)				(6)			(7)			(8)	(9)	(10)			
	SMR CODE	FEDERAL STOCK NUMBER	DESCRIPTION Reference Number & Mfr Code	USABLE ON CODE			30-DAY DS MAINT ALLOW			30-DAY GS MAINT ALLOW					1-yr slw per 100 Equip Cntry	Dep Maint slw per 100 Equip	ILLUST	
							(A) 1- 20	(B) 21- 50	(C) 51- 100	(A) 1- 20	(B) 21- 50	(C) 51- 100					(A) FIG NO	(B) ITM NO
			LAMPHOLDER SUPPORT															
C	P-O-	6240-921-4493	LAMP, INCANDESCENT SGL CONT, 28 VOLTS 8624583 (19209)	E A	1	*	*	*	*	*	*	*	*	14	1			
	X 1 -		*SCREW, PAN HEAD, CROSS RECESSED CRES, PSVT FNSH, NO. 4-40UNC-2, 5/8 IN L MS51957-18 (96906)		2									14	2			
N	P-F-	1249484-3667	LAMPHOLDER ASSEMBLY 10549783 (19209)	E A	1	*	*	*	*	*	*	*	*	14	3			
C	P-F-	5305-054-6652	SCREW, PAN HEAD, CROSS RECESSED CRES, PSVT FNSH, NO. 6-32UNC-2, 3/8 IN L MS51957-28 (96906)	E A	1	*	*	*	*	*	*	*	*	14	4			
C	P-F-	5310-616-3555	WASHER, LOCK, FLAT INTL T, CRES, PSVT FNSH, NO. 6 SCR SIZE MS35333-71 (96906)	E A	1	*	*	*	*	*	*	*	*	14	5			
N	P-O-	1249-239-5874	STRAP. ELECTRICAL GROUND COP, TERM BOTH ENDS 10549759 (19200)	E A	1	*	*	*	*	*	*	*	*	14	6			
C	P-F-	5305-054-5647	SCREW, PAN HEAD, CROSS RECESSED CRES, PSVT FNSH, NO. 4-40UNC-2, 1/4 IN L MS51957-13 (96906)	E A	1	*	*	*	*	*	*	*	*	14	7			
C	P-F-	5319-559-3715	WASHER, LOCK, FLAT INTL T, CRES, PSVT FNSH, NO. 4 SCR SIZE MS35333-70 (96906)	E A	15	*	*	*	*	*	*	*	*	14	8			
N	P-F-	5999-448-5303	CONTACT ASSEMBLY 10549780 (19200)	E A	1	*	*	*	*	*	*	*	*	14	9			
N	P-H-	5305-060-3849	SETSCREW, HEXAGON SOCKET, FLAT POINT CRES, PSVT FNSH, NO. 6-32UNF-3, 3/16 IN L MS51029-17 (96996)	E A	4				*	*	*	*	*	14	10			



WE 51850

Figure 15. Lampholder assembly 10549783-exploded view.

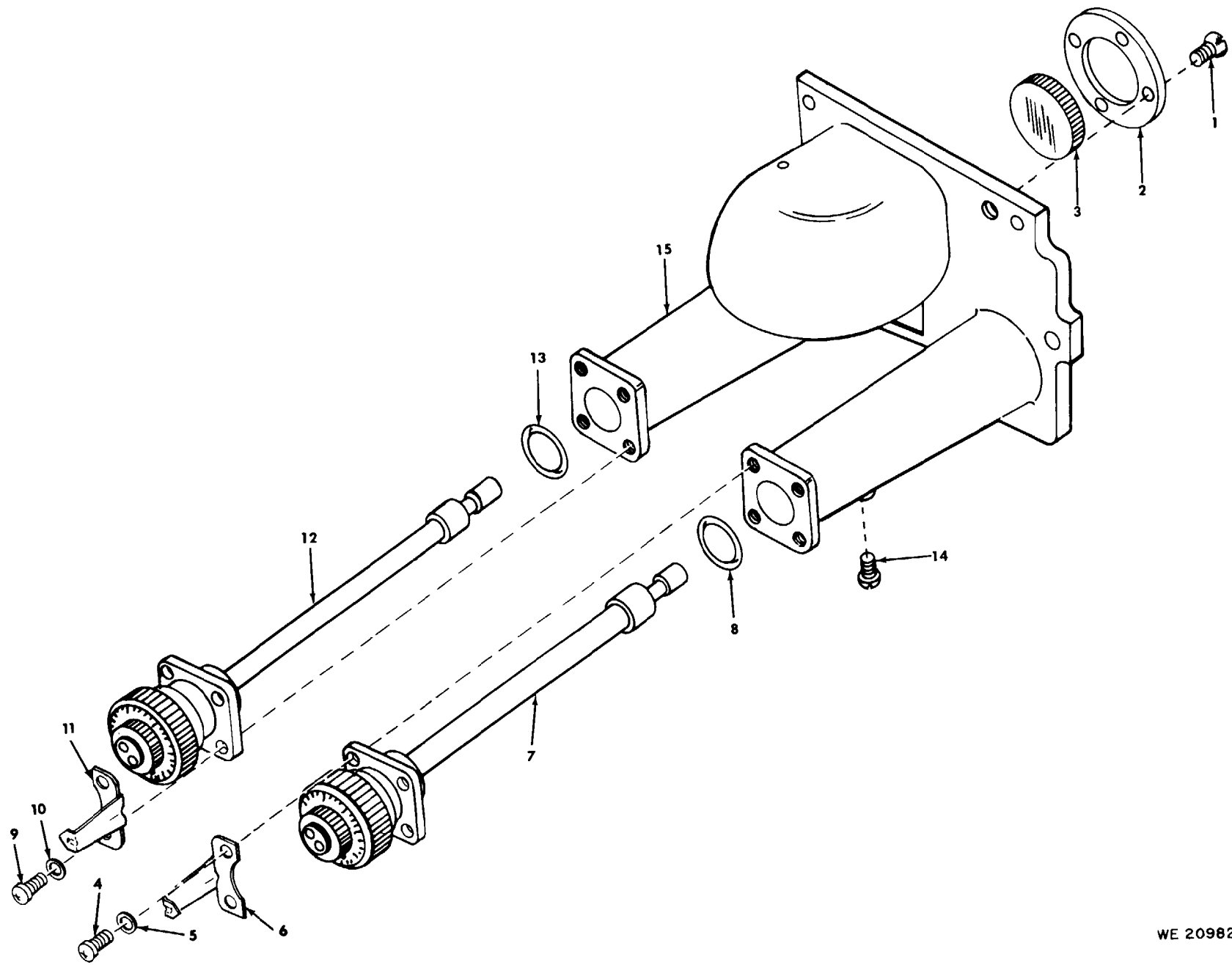
X 1 -	PIN, TAPERED, PLAIN CRES, 7/0 IN DIA, 1/2 IN L MS24692-6 (96906)	1								16	14
X 1 -	GEAR, BEVEL CRES, 30 T, 0.1875 IN ID 8624585-2 (19200)	1								16	15
X 1 -	BEARING, SLEEVE BRZ, 0.2500 IN ID, 0.3748 IN OD, 5/16 IN THK 8624646 (19200)	1								16	16
X 1 -	WIRE, ELECTRICAL TYPE E, 19 STRAND, AWG 16, MIL-W- 16878 8643116-2 (19200)	V								16	17
X 1 -	TERMINAL COP, 5/32 IN DIA, 5/8 IN L 8624719 (19200)	1								16	18
X 1 -	TERMINAL 10541528 (19200)	1								16	19



WE 51851A

Figure 16. Boresight housing assembly 8624502-partial exploded view.

Actn Chng Code	(1)	(2)	(3)	(4)	(5)	(6) 30-DAY DS ALLOW			(7) 30-DAY GS ALLOW			(8)	(9)	ILLUST	
	SMR CODE	FEDERAL STOCK NUMBER	DESCRIPTION Reference Number & Mfr Code USABLE ON CODE	UNIT OF MEAS	QTY INC IN UNIT	(A) 1- 20	(B) 21- 50	(C) 51- 100	(A) 1- 20	(B) 21- 50	(C) 51- 100	1-yr alw per 100 Equip Chngy	Dep Maint alw per 100 Equip	(A) FIG NO	(B) ITM NO
				BORESIGHT HOUSING ASSEMBLY											
C	P-H-	5305-727-8833	SCREW, FLAT HEAD, CROSS RECESSED CRES, PSVT FNSH, NO. 2-56UNC-2, 1/4 IN L MS51959-3 (96906)	EA	4				*	*	*		*	1 7	1
	X 1 -		PLATE CRES, 1.0 IN ID, 1.495 IN OD, 0.065 IN THK 8624645 (19200)		1									1 7	2
C	P-H-	1240-944-7672	WINDOW, OPTICAL INSTRUMENT 8624642 (19200)	EA	1					*	*		*	1 7	3
C	P-F-		SCREW, PAN HEAD, CROSS RECESSED CRES, PSVT FNSH, NO. 6-32UNC-2, 3/8 IN L MS51957-28 (96906)	EA	4	*	*		*	*	*		*	1 7	4
C	P-F-	5310-616-3555	WASHER, LOCK, FLAT INTL T, CRES NO. 6 SCR SIZE MS35333-71 (96906)	EA	4	*	*	*	*	*	*		*	1 7	5
N	P-F-	5355-949-9662	POINTER, DIAL 8624618 (19200)	EA	1	*	*	*	*	*	*		*	1 7	6
	X 1 -		DIAL, CONTROL BORESIGHT 3624522-1 (19200)		1									1 7	7
C	P-F-	5330-912-2656	PACKING, PREFORMED RBR, 0.612 IN ID, 0.103 IN THK 8624710-1	EA	1	*	*	*	*	*	*		*	1 7	8
C	P-F-	5305-054-6652	SCREW, PAN HEAD, CROSS RECESSED CRES, PSVT FNSH, NO. 6-32UNC-2, 3/8 IN L MS51957-28 (96906)	EA	4	*	*	*	*	*	*		*	1 7	9
C	P-F-	5310-616-3555	WASHER, LOCK, FLAT INTL T, CRES, NO. 6 SCR SIZE MS35333-71(96906)	EA	4	*	*	*	*	*	*		*	1 7	10
N	PF-	5355-949-9662	POINTER, DIAL 8624618 (19200)	EA	1	*	*	*	*	*	*		*	1 7	11
	X 1 -		DIAL, CONTROL BORESIGHT 8624522-2 (19200)		1									1 7	12



WE 20982A

Figure 17. Boresight housing assembly 8624502—partial exploded view.

	X 1 -		PIN, STRAIGHT, HEADLESS DWL, CRES, 1/16 IN DIA, 1/4 IN L MS16555-602 (96902)		1									18	13
	X 1 -		PIN, STRAIGHT, HEADLESS DWL, CRES, 3/32 IN DIA, 5/8 IN L MS16555-618 (96966)		2									18	14
C	P-F-	5330-990-8979	PACKING, PREFORMED RBR, 0.424 IN ID, 0.103 IN THK 8619853 (19200)	EA	1	*	*	*	*	*	*	*	*	18	15
	X 1 -		ADAPTER ELEV 8624548-2 (19200)	A	1									18	16
	X 1 -		ADAPTER DEFLECTION 8624548-1 (19200)	B	1									18	16
	X 1 -		HOUSING 8624547 (19200)		1									18	17

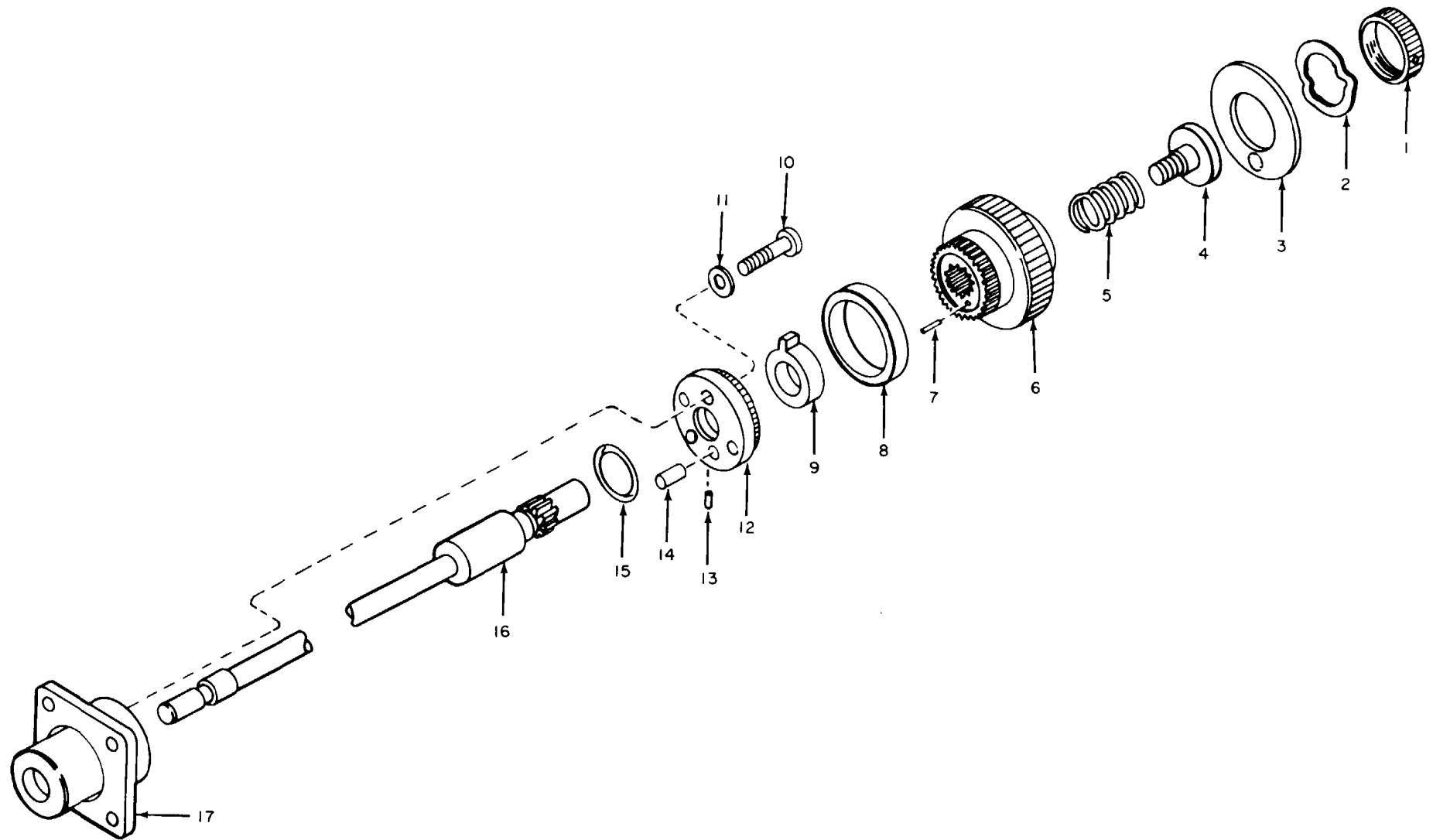


Figure 18. Boresight knob assembly (deflection and elevation)—exploded view.

WE 51871A

Actn Chng Code	(1) SMR CODE	(2) FEDERAL STOCK NUMBER	(3) DESCRIPTION Reference Number & Mfr Code USABLE ON CODE		UNIT OF MEAS	30-DAY DS			(7) SO-DAY GS			(8) Dep Maint per 100 Equip	(9) Dep Maint per 100 Equip	(10) ILLUST							
						MAINT			ALLOW					MAINT			ALLOW			(A) FIG NO	(B) ITM NO
						INC IN UNIT	(A) 1- 20	(B) 21- 50	(C) 51- 100	(A) 1- 20	(B) 21- 50			(C) 51- 100	(A) 1- 20	(B) 21- 50	(C) 51- 100				
			PROJECTOR HOUSING																		
C	P-D-	5305-770-2529	SCREW, FLAT HEAD, CROSS RECESSED CRES, PSVT FNSH, NO. 4-40UNC-2, 1/8 IN L MS51959-11 (96906)		EA	3							*	19	1						
	X 1 -		PLATE 8624582 (19200)			1								19	2						
C	P-D	1240-944-7683	WINDOW, OPTICAL INSTRUMENT 8624636 (19200)		EA	2							*	19	3						
C	P-F-	5305-054-6651	SCREW, PAN HEAD, CROSS RECESSED CRES, PSVT FNSH, NO. 6-32UNC-2, 5/16 IN L MS51957-27 (96906)		EA	3	*	*	*	*	*	*	*	19	4						
C	P-D-	1240-944-7739	BEAM SPLITTER 1577789 (19200)		EA	1							*	19	5						
C	P-H-	5330-912-2661	PACKING, PREFORMED RBR, 1.799 IN ID, 0.103 IN THK 1624710-7 (19200)		EA	1				*	*	*	*	19	6						
	X 1 -		PIN, STRAIGHT, HEADLESS DWL, CRES, 1/8 IN DIA, 3/8 IN L MS16555-625 (96906)			2								19	7						
	X 1 -		PIN, STRAIGHT, HEADLESS DWL, CRES, 1/4 IN DIA, 3/8 IN L MS16555-648 (96906)			1								19	8						

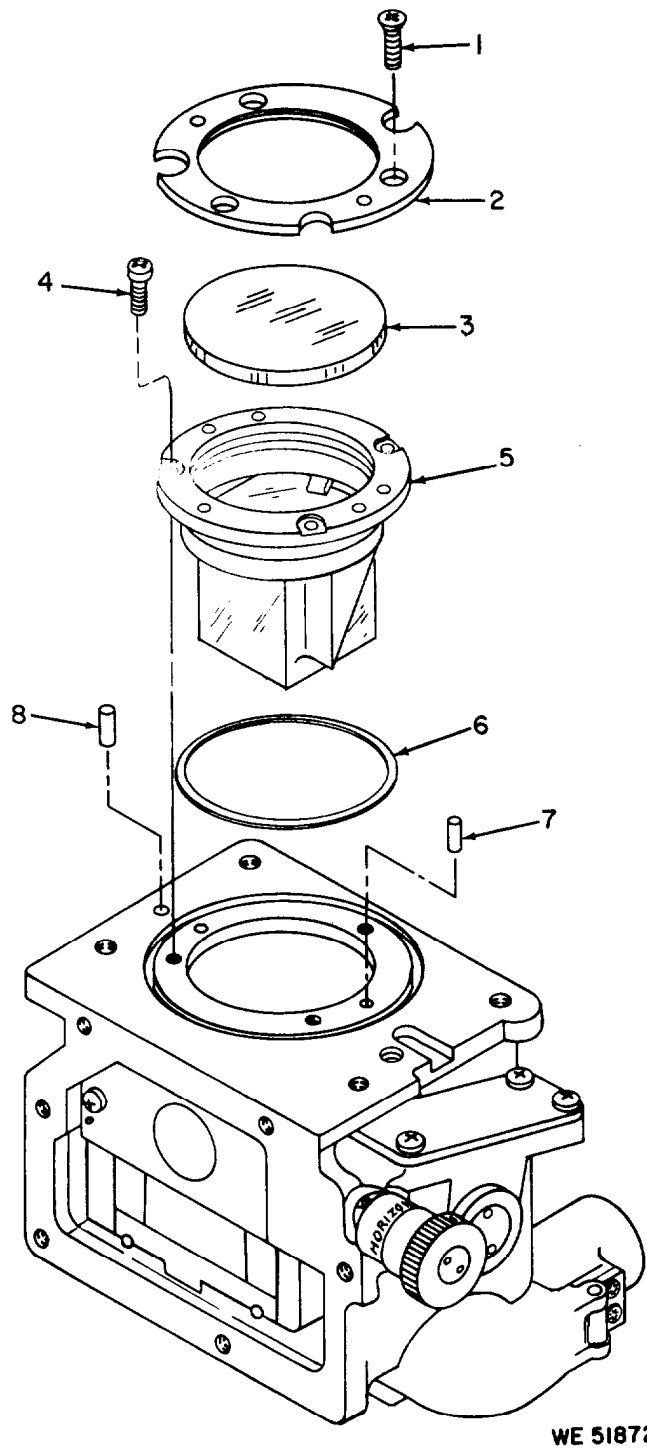
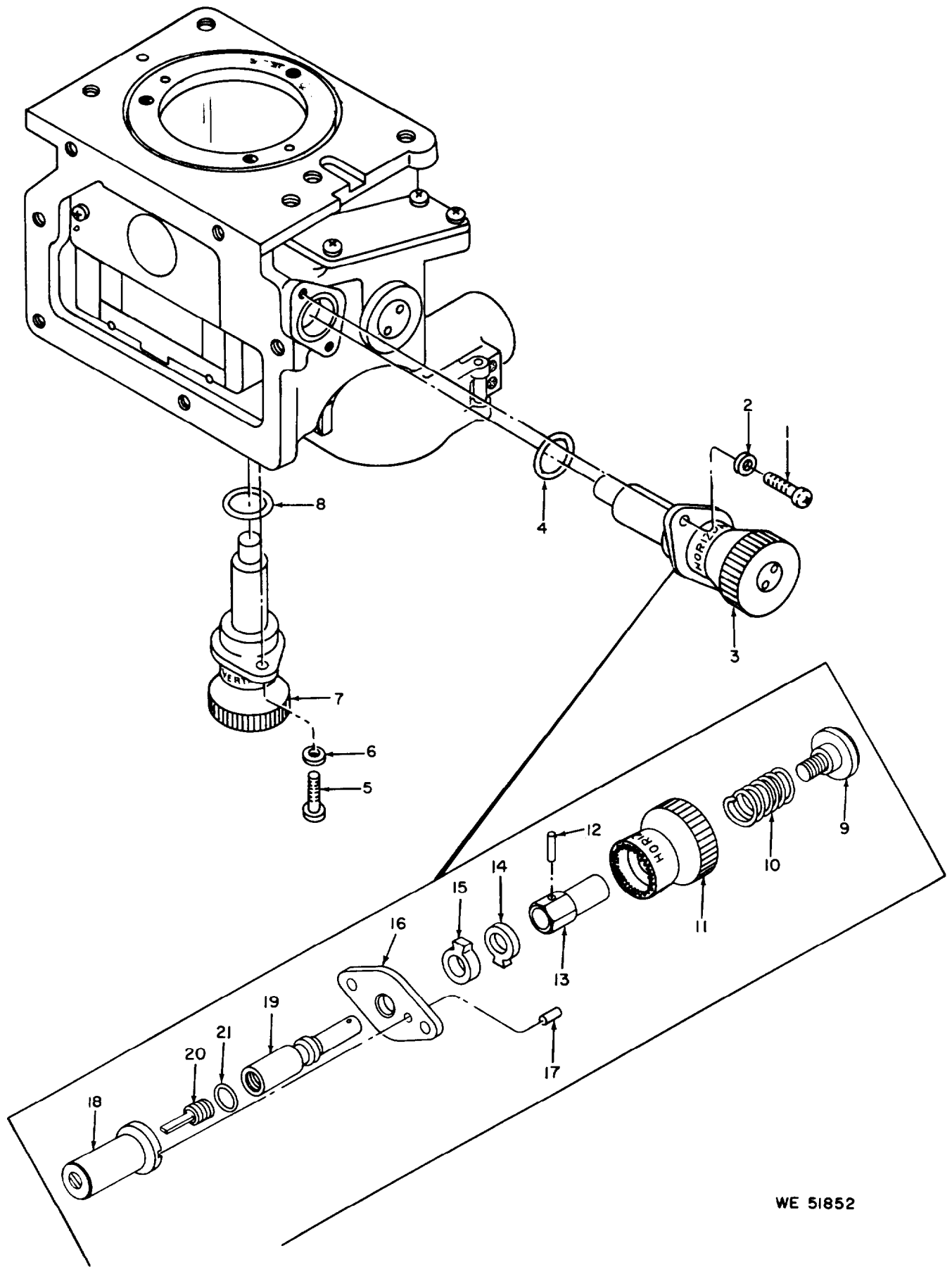


Figure 19. Projector housing with related partial exploded view.

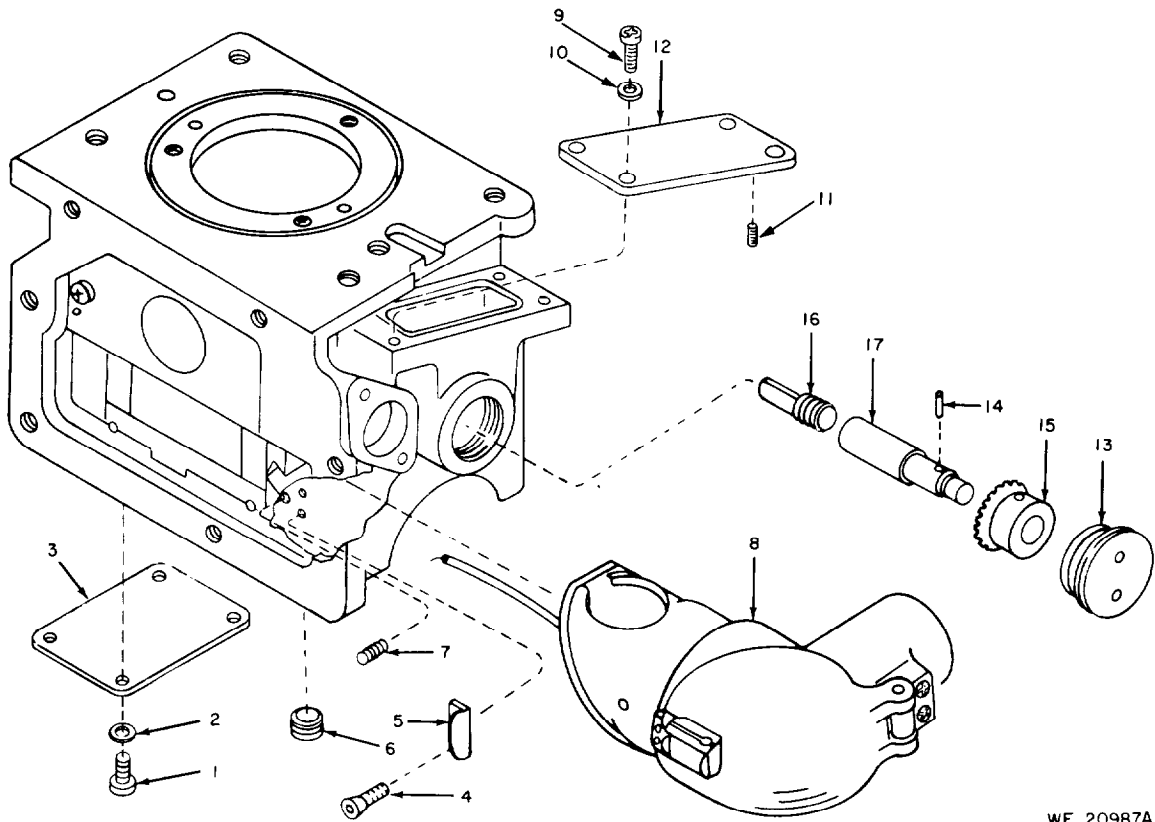
	X 1 -		PIN, STRAIGHT, HEADLESS DWL, CRES, 1/16 IN DIA, 5/16 IN L MS16555-603 (96906)		1								2 0	12
	X 1 -		ADAPTER, SLIDE CRES, NO. 6-40UNF-2 IN ID, 0.687 IN L 8624681 (19200)		1								2 0	13
N	P-F-	5310-438-8605	WASHER, KEY CRES, 0.188 IN ID, 0.145 IN THK 8624602 (19200)	EA	1	*	*	*	*	*	*	*	2 0	14
N	P-F-	5310-439-2597	WASHER, KEY CRES, 0.188 IN ID, 0.125 IN THK 8624601 (19200)	EA	1	*	*	*	*	*	*	*	2 0	15
	X 1 -		PLATE PINNED AND SERRATED 8624568 (19200)		1								2 0	16
	X 1 -		PIN, STRAIGHT, HEADLESS DWL, CRES, 3/32 IN DIA, 5/16 IN L MS16555-617 (96906)		1								2 0	17
	X 1 -		RETAINER 8624599 (19200)		1								2 0	18
	X 1 -		ADAPTER 8624600 (19200)		1								2 0	19
	X 1 -		SETSCREW, SPECIAL CRES, 5/16-14NS-3, 7/8 IN L 8624681-1 (19200)	A	1								2 0	20
	X 1 -		SETSCREW, SPECIAL CRES, 5/16-14NS-3, 1-7/16 IN L 8624681-2 (19200)	B	1								2 0	20
C	P-F-	5330-905-9871	PACKING, PREFORMED RBR, 0.239 IN ID, 0.070 IN THK 8624711-1 (19200)	EA	1	*	*	*	*	*	*	*	2 0	21



WE 51852

Figure 20. Projector knob assembly (vertical and horizontal)-partial exploded view.

Actn Chng Code	(1) SMR CODE	(2) FEDERAL STOCK NUMBER	(3) DESCRIPTION Reference Number & Mfr Code	(4) USABLE ON CODE UNIT MEAS	(5) QTY I N C IN UNIT	(6) 30-DAY DS MAINT ALLOW			(7) 30-DAY GS MAINT ALLOW			1-yr. alw per 100 Equip Cntry	Dep Maint alw per 100 Equip	(10) ILLUST		
						(A) 1- 20	(B) 21- 50	(C) 51- 100	(A) 1- 20	(B) 21- 50	(C) 51- 100			(A) FIG NO	(B) ITEM NO	
						*	*	*	*	*	*			*	*	
			PROJECTOR HOUSING													
C	P-F-	5305-054-5647	SCREW, PAN HEAD, CROSS RECESSED CRES, PSVT FNSH, NO. 4--40UNC-2, 1/4 IN L MS51957-13 (96906)	EA	4	*	*	*	*	*	*	*	*	21	1	
C	P-F-	5310-550-3715	WASHER, LOCK, FLAT INTL T, CRES, PSVT FNSH, NO. 4 SCR SIZE MS35333-70 (96906)	EA	4	*	*	*	*	*	*	*	*	21	2	
	X 1 -		COVER AL ALY, 1.44 IN W, 2.13 IN L 8624639 (19200)		1									21	3	
N	P-D-	5305-764-2966	SCREW, PAN HEAD, CROSS RECESSED CRES, PSVT FNSH, NO. 2-56UNC-2, 3/16 IN L MS51959-2 (96906)	EA	4							*	*	21	4	
	X 1 -		*CATCH SETSCREW, HEXAGON SOCKET, FLAT POINT CRES, PSVT FNSH, NO. 4-40UNC-3, 1/4 IN L MS51029-60 (96906)		1									21	5	
			SETSCREW, HEXAGON SOCKET, FLAT POINT CRES, PSVT FNSH, NO. 4-40UNC-3, 1/4 IN L MS51021-22 (96906)		1									21	6	
C	P-D-	5305-576-7266	SETSCREW, HEXAGON SOCKET, CUP POINT CRES, PSVT FNSH, NO. 6-32UNC-3, 3/16 I N L MS51021-22 (96906)	EA	2									21	7	
N	P-F-	1240-945-5332	LAMP ASSEMBLY 8624519 (19200)	EA	1	*	*	*	*	*	*	*	*	21	8	
C	P-F-	5305-054-6651	SCREW, PAN HEAD, CROSS RECESSED CRES, PSVT FNSH, NO. 6-32UNC-2, 5/16 IN L MS51957-27 (96906)	EA	4	*	*	*	*	*	*	*	*	21	9	
C	P-F-	5310-616-3555	WASHER, LOCK, FLAT INTL-T, CRES, PSVT FNSH, NO. 6 SCR SIZE MS35333371 (96906)	EA	4	*	*	*	*	*	*	*	*	21	10	
	X 1 -		SETSCREW, HEXAGON SOCKET, FLAT POINT AL ALY, CD PLD, NO. 8-32USC-3, 1/8 IN L MS51965-27 (96906)		2									21	11	

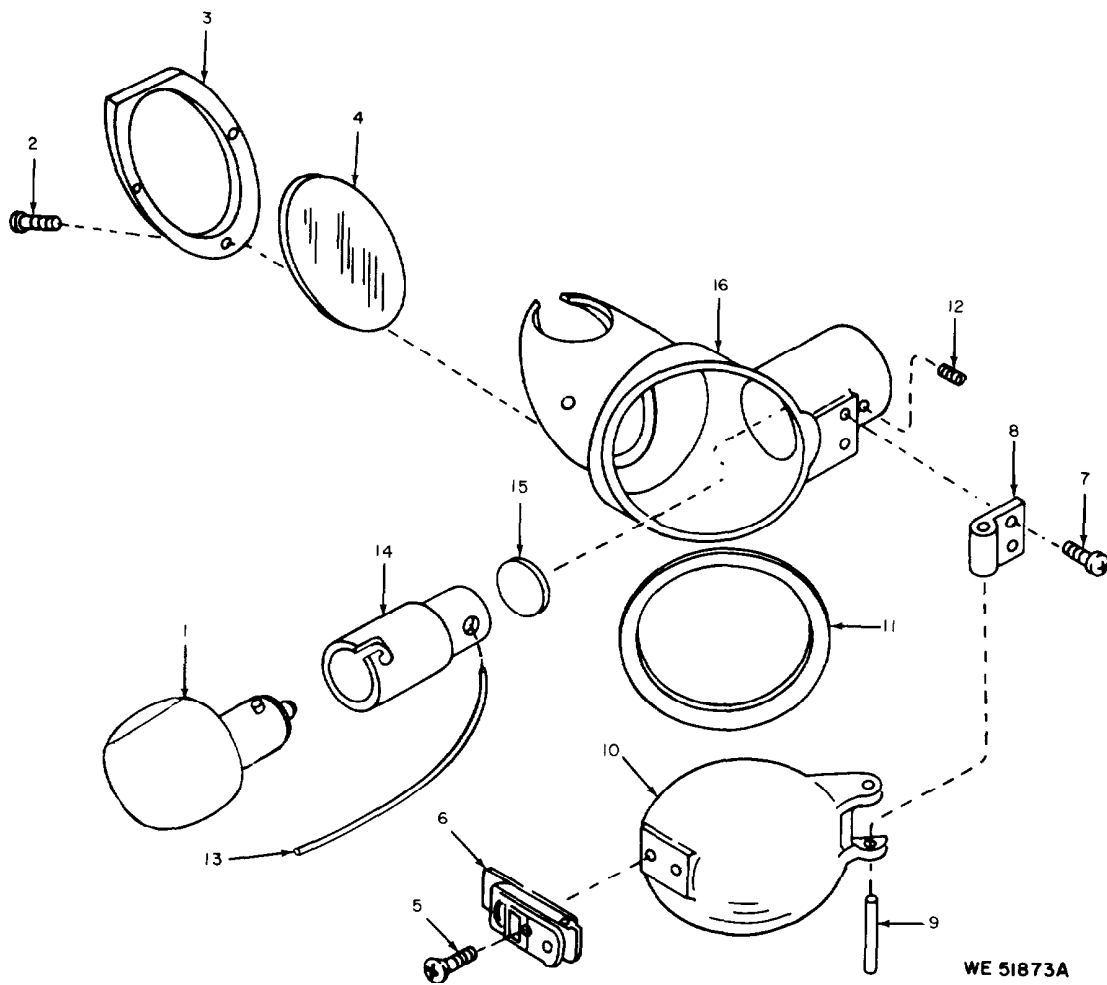


WE 20987A

Figure 21. Projector homing 8624506 with related parts-partial exploded view.

Actn Chng Code	(1) SMR CODE	(2) FEDERAL STOCK NUMBER	(3) DESCRIPTION Reference Number & Mfr Code USABLE ON CODE	(4) UNIT O F MEAS	(5) QTY INC I N UNIT	(6) 30-DAY DS MAINT ALLOW			(7) 30-DAY GS MAINT ALLOW			(8) 1-yr alw per 100 Equip Cnctg	(9) Dep Maint alw per 100 Equip	(10) ILLUST	
						(A) 1 20	(B) 21- 50	(C) 51- 100	(A) 1- 20	(B) 21- 50	(C) 51- 100			(A) FIG NO	(B) ITM NO
						C	P-O-	6240-921-4493	LAMP HOUSING ASSEMBLY LAMP, INCANDESCENT XL, CONT, 28 V 8624583 (19200)	EA	1			*	*
C	P-H-	5305-727-8833	SREW, FLAT HEAD, CROSS RECESSED: CRES, PSVT FNSH, NO. 2-56UNC-2, 1/4 IN L MS51959-3 (96906)	EA	3				*	*	*	*	2 2	2	
c	P-H-	1240-946-1228	PLATE 8624587 (19200)	EA	1				*	*	*	*	2 2	3	
N	P-H-	1240-403-6857	MIRROR 11727579 (19200)	EA	1				*	*	*	*	2 2	4	
N	P-D-	5305-764-2966	SCREW, FLAT HEAD, CROSS RECESSED CRES, PSVT FNSH, NO. 2-56UNC-2, 3/16 IN L MS51959-2 (96996)	EA	2							*	2 2	5	
N	P-D-	5340-834-0423	CATCH 10514713 (19200)	EA	1							*	2 2	6	
C	P-F-	5305-054-5647	SCREW, PAN HEAD, CROSS RECESSED CRES, PSVT FNSH, NO. 4-40UNC-2, 1/4 IN L MS51957-13 (96996)	EA	2	*	*	*	*	*	*	*	2 2	7	
	X 1 -		HINGE 8624696 (19200)		1								2 2	8	
	X 1 -		PIN, STRAIGHT CRES, 3/32 IN DIA, 1-1/8 IN I, 586477 (21450)		1								2 2	9	
	X 1 -		COVER 8624613 (19200)		1								2 2	10	
	X 1 -		GASKET RBR, 2-3/16 IN ID, 2-7/16 IN OD, 0.046 II THK 8624694 (19200)		1								2 2	11	
	X 1 -		SETSCREW, HEXAGON SOCKET, CUP POINT CRES, PSVT FNSH, NO. 4-40UNC-3, 1/8 IN L MS51021-9 (96906)		1								2 2	12	

X1-	WIRE, ELECTRICAL TYPE E, 19 STRAND, AWG 16, MIL-W-16878 8643116-2 (19200)	V											22	13
X1-	SOCKET 8624697 (19200)	1											22	14
X1-	INSULATOR 8624695 (19200)	1											22	15
X1-	HOUSING 8624545 (19200)	1											22	16

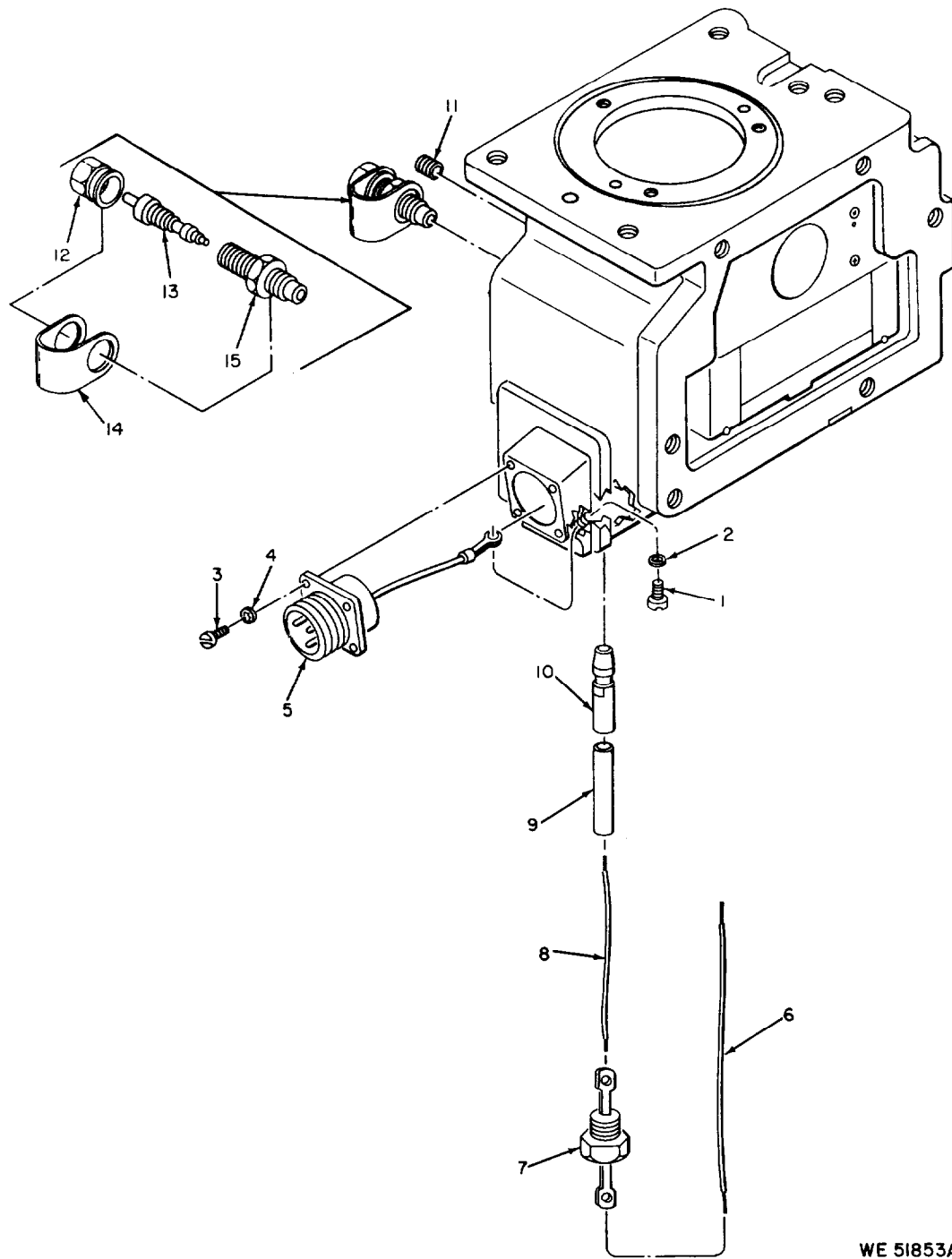


WE 51873A

Figure 22. Lamp housing assembly 8624519--exploded view.

Actn Chng Code	SMR CODE	FEDERAL STOCK NUMBER	DESCRIPTION Reference Number & Mfr Code USABLE ON CODE	UNIT OF MEAS	QTY INC IN UNIT	30-DAY DS MAINT ALLOW			30-DAY GS MAINT ALLOW			(8) 1-yr alw per 100 Equip Cnctg	(9) Dep Maint alw per 100 Equip	(10) ILLUST	
						(A) 1- 20	(B) 21- 50	(C) 51- 100	(A) 1- 20	(B) 21- 50	(C) 51- 100			(A) FIG NO	(B) ITM NO
									ELECTRICALCONNECTOR						
	X 1 -		SCREW, MACHINE PAN HEAD, CROSS RECESSED BR, PLN FNSH, NO. 4-40UNC-2, 3/16 IN L MS35212-11 (96906)		1									23	1
	X 1 -		WASHER, LOCK, FLAT INTL T, CRES, NO. 4 SCR SIZE MS35333-87 (96906)		1									23	2
	X 1 -		SCREW, MACHINE PAN HEAD, CROSS RECESSED CRES, PSVT FNSH, NO. 4-40UNC-2, 5/16 IN L MS51957-14 (96906)		4									23	3
C	P-F-	5316-550-3715	WASHER, LOCK, FLAT INTL T, CRES, PSVT FNSH, NO. 4 SCR SIZE MS35333-70 (96906)	EA	4	*	*	*	*	*	*	*	*	23	4
N	P-F-	5935-905-9618	RECEPTACLE ASSY 8624721 (19200)	EA	1	*	*	*	*	*	*	*	*	23	5
	X 1 -		WIRE, ELECTRIC TYPE E, 19 STRANDS, AWG 16, MIL-W-16878 86431162 (19200)		V									23	6
	X 1 -		TERMINAL 10541528 (19200)		1									2 3	7
	X 1 -		WIRE, ELECTRIC TYPE E, 19 STRANDS, AWG 16, MIL-W-16878 8643116-2 (19200)		V									23	8
	X 1 -		CONNECTOR 8624720 (19200)		1									23	9
	X 1 -		TERMINAL COP, 5/32 IN DIA, 5/8 IN L 8624719 (19200)		1									23	10
N	P-D-	5305-939-0892	SETSCREW, HEXAGON SOCKET, CUP POINT CRES, PSVT FNSH, 5/16-24UNF-3, 1/4 IN L MS51023-72 (96906)	EA	1							*	*	23	11
N	P-F-	2640-507-9260	CAP, AIR VALVE 8200055 (19200)	EA	1	*	*	*	*	*	*	*	*	2 3	12

Actn Chng Code	SMR CODE	FEDERAL STOCK NUMBER	DESCRIPTION Reference Number & Mfr Code USABLE ON CODE	Text O F MEAS	QTY I N C I N UNIT	(6) 30-DAY DS MAINT ALLOW			(7) 30-DAY GS MAINT ALLOW			1-yr. Maint per 100 Equip Units	(8) 10-yr. Maint per 100 Equip	(10) ILLUST	
						(A) 1- 2 0	(B) 21- 5 0	(C) 51- 100	(A) 1- 2 0	(B) 21- 5 0	(C) 51- 100			(A) FIG NO	(13) ITEM NO
						N	P-F-	2640-01X-3543	VALVE, AIR CHECK MS51377-2 (96906)	EA	1			*	*
N	P-F-	1240-464-4792	STRAP 10516567 (19200)	EA	1	*	*	*	*	*	*	*		2 3	14
N	P-F-	2640-114-1096	VALVE, STEM MS51607-1 (96906)	EA	1	*	*	*	*	*	*	*		2 3	15



WE 51853A

Figure 23. Electrical connector--partial exploded view.

N	P-D-	5360-400-8514	SPRING, COMPRESSION, HELICAL MUW, 1.291 IN FREE L, 37 COILS 8624693 (19200)	EA	2							*	24	13
	X 1 -		SLIDE 8624542 (19200)		1								24	14
	X 1 -		PIN, SPECIAL AL ALY, 0.24 IN L 7651965 (19200)		4								24	15
	X 1 -		SUPPORT 8624543 (19200)		1								24	16

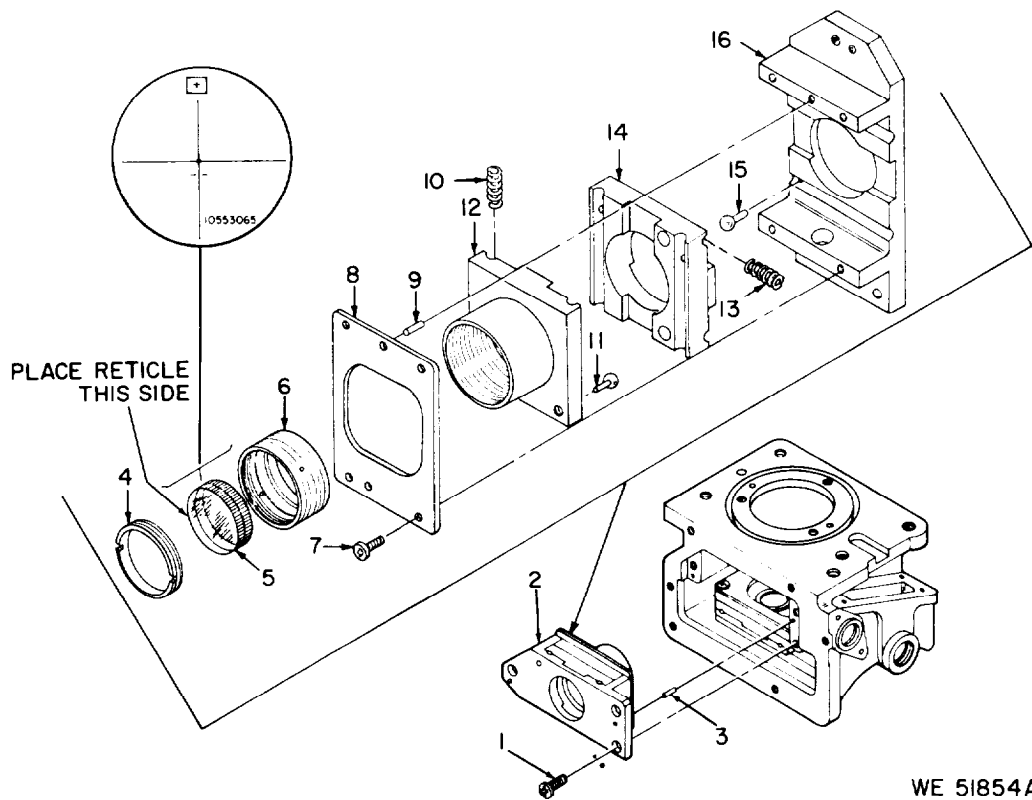
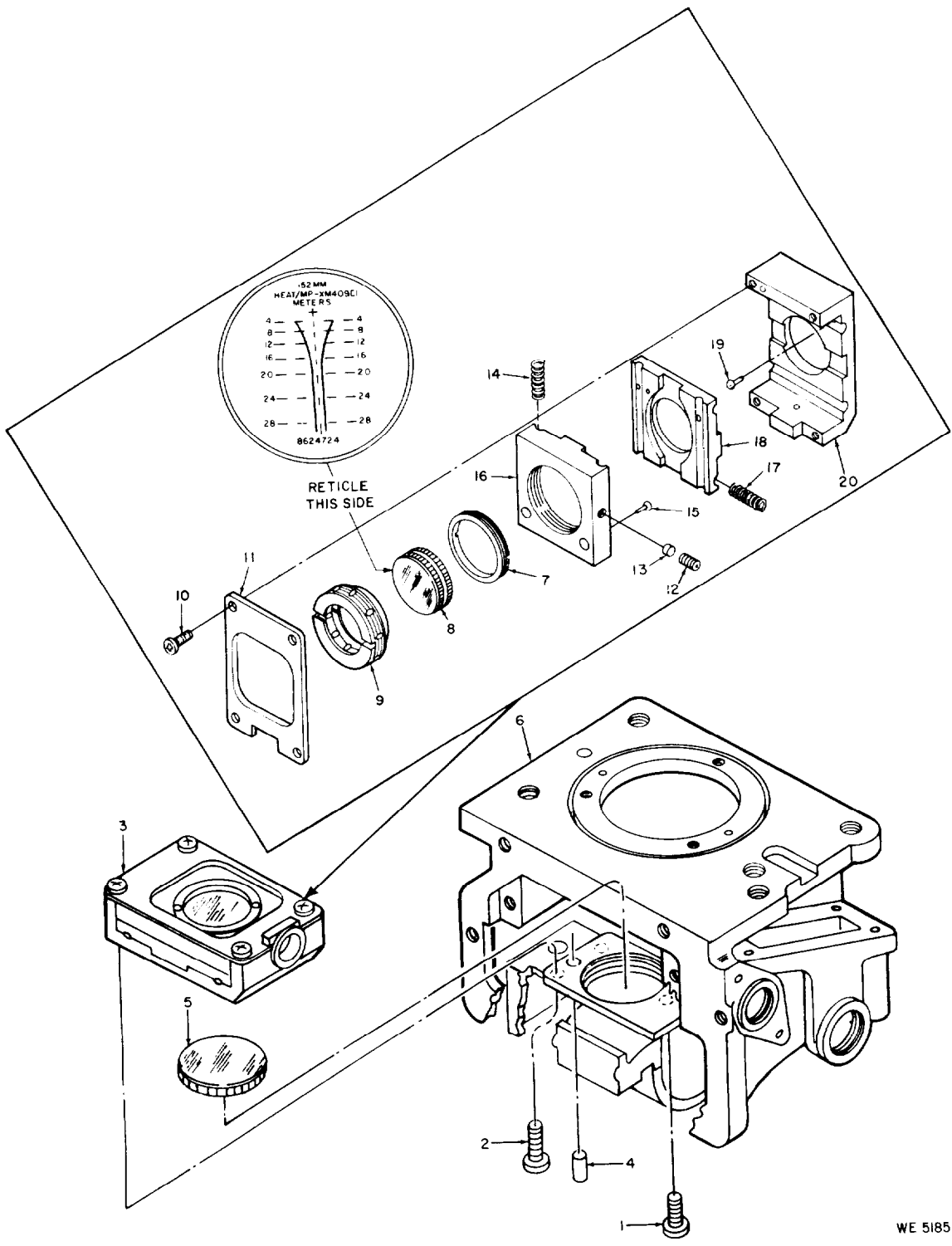


Figure 24. Reticle holder assembly (missile) 10553065--partial exploded view.

Actn Chng Code	(1) SMR CODE	(2) FEDERAL STOCK NUMBER	(3) DESCRIPTION Reference Number & Mfr Code USABLE ON CODE	(4) UNIT OF MEAS	(5) QTY INC IN UNIT	(6) 30-DAY DS MAINT ALLOW			30-D. & GS MAINT ALLOW			1-yr alw per 100 Equip Cntry	Dep Maint alw per 100 Equip	ILLUST		
						(A) 1- 20	(B) 21- 50	(C) 51- 100	(A) 1- 20	(B) 21- 50				(A) FIG NO	(B) ITEM NO	
			RETICLE HOLDER ASSEMBLY (CONVENTIONAL)													
c	P-F-	5305-054-5647	SCREW, MACHINE PAN HEAD, CROSS RECESSED CRES, PSVT FNSH, NO. 4-40UNC-2, 1/4 IN L MS51957-13 (96966)	EA	5	*	*	*	*	*	*	*				1
C	P-D-	5305-054-5649	SCREW, MACHINE PAN HEAD, CROSS RECESSED CRES, PSVT FNSH, NO. 4-40UNC-2, 3/8 IN L MS51957-15 (96906)	EA	2							*				2
C	P-D-	1240-944-7717	CELL ASSEMBLY CONVENTIONAL RETICLE 8624517 (19200)	EA	1							*	25			3
	X 1 -		PIN, STRAIGHT, HEADLESS DWL, CRES, 1/8 IN DIA, 3/8 IN L MS16555-625 (96906)		2											4
C	P-D-	1240-944-7677	WINDOW, OPTICAL INSTRUMENT 8624637 (19200)	EA	1							*				5
	X 1 -		HOUSING 8624506 (19200)										25			6
	X 1 -		RETAINER, OPTICAL ELEMENT AL ALY, 1-3/16-32NS-2 OD, 0.13 IN THK 8624688 (19209)		1								25			7
	X 1 -		RETICLE ASSEMBLY CONVENTIONAL 8624570 (19200)		1											8
	X 1 -		CELL, OPTICAL ELEMENT AL ALY, SLTD, 1-3/16-32NS-2 ID, 1-3/8-32NS-2 OD, 0.36 IN THK 8624611 (19200)		1								25			9
C	P-F-	5305-054-5647	SCREW, MACHINE PAN HEAD, CROSS RECESSED CRES, PSVT FNSH, NO. 4-40UNC-2, 0.36 IN THK MS51957-13 (96906)	EA	4	*	*	*	*	*	*	*	25			10
	X 1 -		COVER 8624689 (19290)		1								25			11



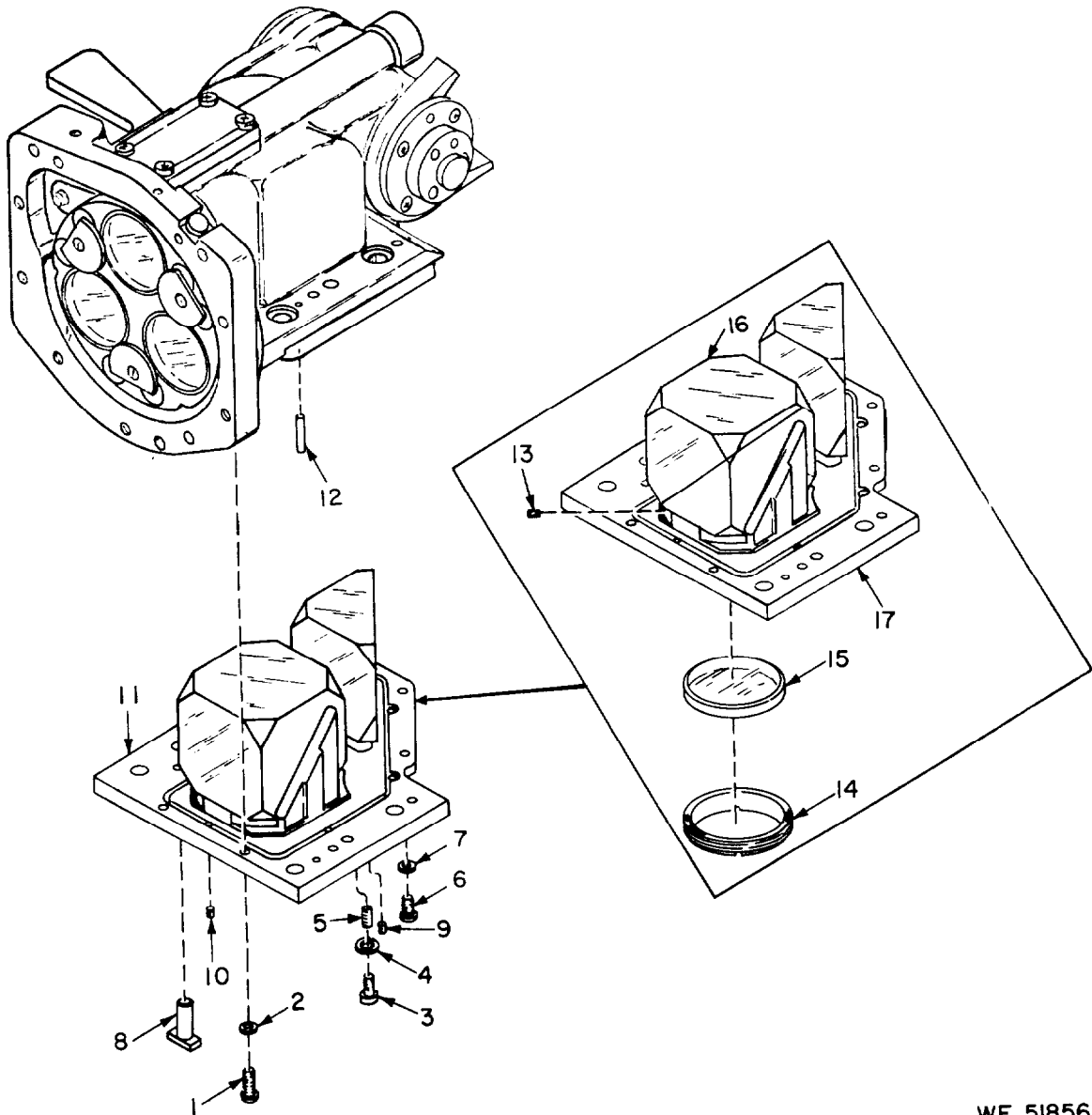
WE 51855A

Figure 25. Reticle holder assembly (conventional) 8624570--partial exploded view.

Actn Chng Code	(1) SMR CODE	(2) FEDERAL STOCK NUMBER	(3) DESCRIPTION Reference Number & Mfr Code	(4) UNIT OF MEAS	(5) QTY INC I N UNIT	(6) 30-DAY DS ALLOW			(7) 30-DAY GS ALLOW			(8) 1-yr alw per 100 Equip Cntgty	(9) Dep Maint Blw per 100 Equip	(10) ILLUST	
						Text Text	(B) 21- 30	(C) 31- 100	(A) 1- 20	(B) 21- 50	Text Text			(A) FIG NO	(B) SYM NO
N	P-H-	5305-060-3849	PORRO PRISM AND HOUSING ASSEMBLY SETSCREW, HEXAGON SOCKET, FLAT POINT CRES, PSVT FNSH, NO. 6-32UNC-3, 3/16 IN L MS51029-17 (96906) A	EA	2				*	*	*		*	26	1
C	P-H-	5305-551-0156	SETSCREW, HEXAGON SOCKET, CUP POINT CRES, PSVT FNSH, NO. 8-32UNC-3, 3/16 IN L MS51021-31 (96906) B	EA	2				*	*	*		*	26	1
N	P-D-T	1240-498-6373	CELL ASSEMBLY 10553191 (19200) A	EA	1								*	26	
C	P-D-T	1240-903-3884	CELL ASSEMBLY 3624557 (19200) B	EA	1								*	26	
	X 1 -		RETAINER, OPTICAL ELEMENT AL ALY, 2-13/32-32NS-2 IN OD, 0.19 IN THK 8624667 (19200)		1									26	
	X 1 -		LENS, OPTICAL INSTRUMENT 8624665 (19200)		1									26	
	X 1 -		SPACER, OPTICAL ELEMENT 8624666 (19200)		1									26	
	X 1 -		LENS, OPTICAL INSTRUMENT 8624664 (19200)		1									26	
	X 1 -		CELL, OPTICAL ELEMENT 10553192 (19200) A		1									26	
	X 1 -		CELL, OPTICAL ELEMENT 8624598 (19200) B		1									26	
	P-H-	5305-054-6669	SCREW, MACHINE PAN HEAD, CROSS RECESSED CRES, PSVT FNSH, NO. 8-32UNC-2, 7/16 IN L MS51957-44 (96996)	EA	2				*	*	*		*	26	
	P-H-	5310-543-2739	WASHER, LOCK, FLAT INTL T, CRES, PSVT FNSH, NO. 8 SCR SIZE MS35333-72 (96906)	EA	2				*	*	*		*	26	9

N	P-D-	5305-054-6670	SCREW, MACHINE PAN HEAD, CROSS RECESSED CRES, PSVT FNSH, NO. 8-32UNC-2, 1/2 IN L MS51957-45 (96906)	EA	2									26	10
C	P-H-	5310-543-2739	WASHER, LOCK, FLAT INTL T, CRES, PSVT FNSH, NO. 8 SCR SIZE MS35333-72 (96906)	EA	2			*	*	*			*	26	11
N	P-D-	5310-722-5998	WASHER, FLAT, ROUND CRES, NO. 6 SCR SIZE MS15795-805 (96906)	EA	2								*	26	12
N	P-D-	1240-949-8653	PRISM CEMENTED 8624560 (19200)	EA	1								*	26	13
	X 1 -		SETSCREW, HEXAGON SOCKET, FLAT POINT AL STL, CD PLD, NO. 8-32UNC-3, 1/8 IN L MS51965-27 (96906)		4									26	14
	X 1 -		PIN, STRAIGHT, HEADLESS DWL, CRES, 3/32 IN DIA, 5/16 IN L MS16555-617 (96906)		2									26	15
N	P-D-	5305-763-6963	*SCREW, MACHINE FLAT HEAD, CROSS RECESSED CRES, PSVT FNSH, NO. 6-32UNC-2, 3/8 IN L MS51959-28 (96906)	EA	4								*	26	16
	X 1 -		*BEARING 8624580 (19200)		1									26	17
	X 1 -		*PIN, STRAIGHT, HEADLESS DWL, CRES, 1/8 IN DIA, 3/8 IN L MS16555-625 (96906)		2									26	18
	X 1 -		PIN, STRAIGHT, HEADLESS DWL, CRES, 3/16 IN DIA, 5/8 IN L MS16555-640 (96906)		1									26	19
	X 1 -		HOUSING ASSEMBLY 10553200 (19200)	A	1									26	20
	X 1 -		HOUSING ASSEMBLY 8624716 (19200)	B	1									26	20
			*COMPONENT OF HOUSING ASSEMBLIES 10553200 AND 8624716												

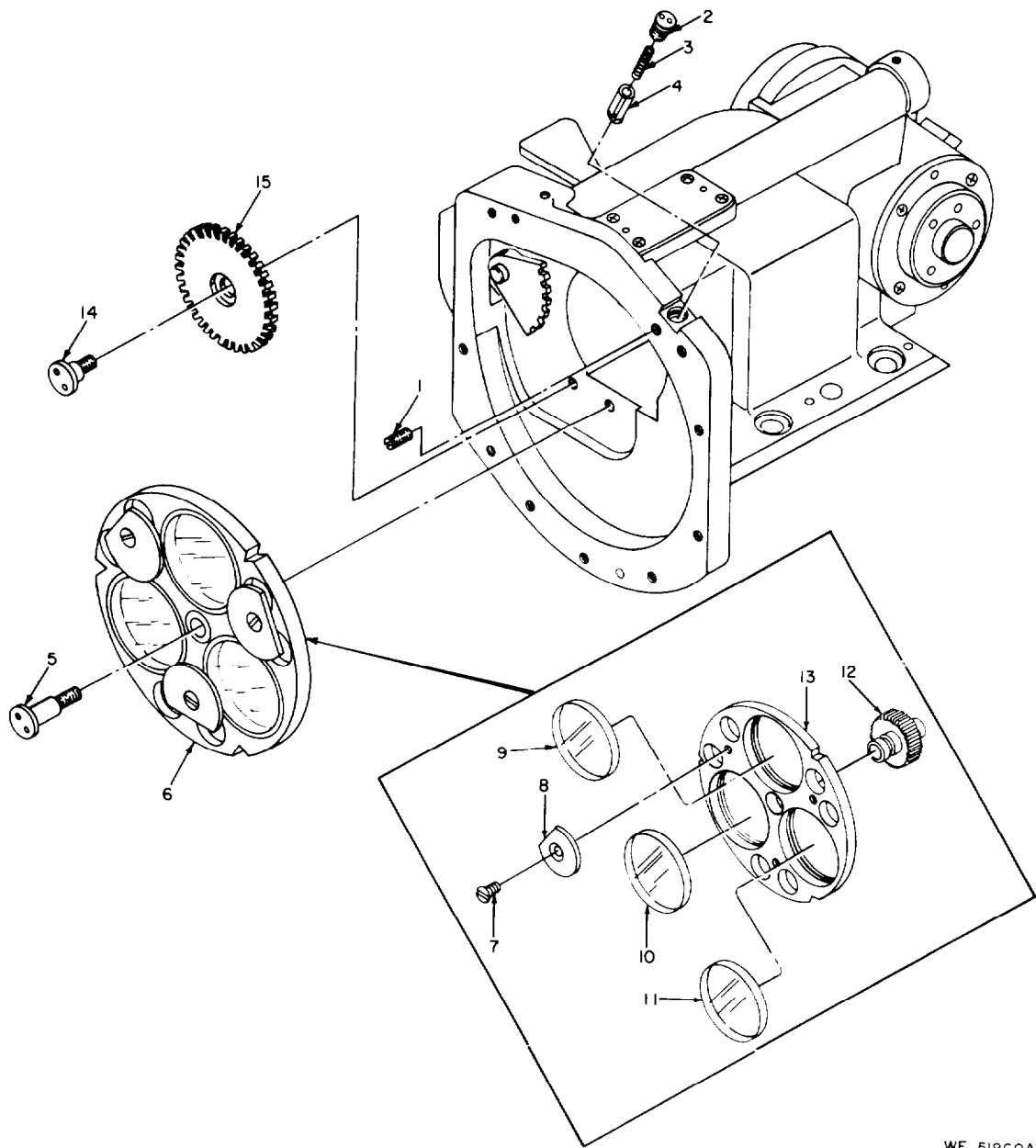
Actn Chng Code	SMR CODE	FEDERAL STOCK NUMBER	DESCRIPTION Reference Number & Mfr Code USABLE ON CODE	UNIT OF MEAS	QTY INC IN UNIT	(6) 30-DAY DS MAINT ALLOW			(7) 30-DAY GS MAINT ALLOW			(8) 1-yr alw per 100 Equip Cateqy	(9) Dep Maint Alw per 100 Equip	(10) ILLUST	
						(A) 1- 20	(B) 21- 50	(C) 51- 100	(A) 1- 20	(B) 21- 50	(C) 51- 100			(A) FIG NO	(B) ITM NO
						PRISM ASSEMBLY									
C	P-D-	5305-054-6654	SCREW, MACHINE PAN HEAD, CROSS RECESSED CRES, PSVT FNSH, NO. 6-32UNC-2, 1/2 IN L MS51957-30 (96906)	EA	6									27	1
C	P-F-	5310-616-3555	WASHER, LOCK, FLAT INTL T, CRES, PSVT FNSH, NO. 6 SCR SIZE MS35333-71 (96906)	EA	6	*	*	*	*	*	*	*	*	27	1
C	P-D-	5305-988-7601	SCREW, CAP, HEXAGON SOCKET CRES, PSVT FNSH, NO. 8-32UNC-3, 3/8 IN L MS16995-25 (96906)	EA	1									27	3
N	P-H-	5310-933-8119	WASHER, LOCK, SPRING, HELICAL CRES, PSVT FNSH, NO. 8 SCR SIZE MS35338-137 (96906)	EA	1				*	*	*	*	*	27	4
	X 1 -		INSERT, SCREW LOCKING, COIL, COARSE THREAD NO. 8-32, 0.246 IN L MS21209-C0815 (96906)		1									27	5
C	P-F-	5305-054-6652	SCREW, MACHINE PAN HEAD, CROSS RECESSED CRES, PSVT FNSH, NO. 6-32UNC-2, 3/8 IN L MS51957-28 (96906)	EA	2	*	*	*	*	*	*	*	*	27	6
C	P-F-	5319-616-3555	WASHER, LOCK, FLAT INTL T, CRES, PSVT FNSH, NO. 6 SCI SIZE MS35333-71(96906)	EA	2	*	*	*	*	*	*	*	*	27	7
	X 1 -		PIN, STRAIGHT, HEADED CRES, 0.2510 IN DIA, 0.64 IN L 8624628 (19200)		1									27	8
N	P-D-	5305-995-8766	SETSCREW, HEXAGON SOCKET, FLAT POINT CRES, PSVT FNSH, NO. 8-32UNC-3, 1/4 IN L MS51029-27 (96906)	EA	1									27	9
	X 1 -		SETSCREW, HEXAGON SOCKET, FLAT: POINT AL STL, CD PLD, NO. 8-32UNC-3, 1/8 IN L MS51965-27 (96906)		10									27	10



WE 51856A

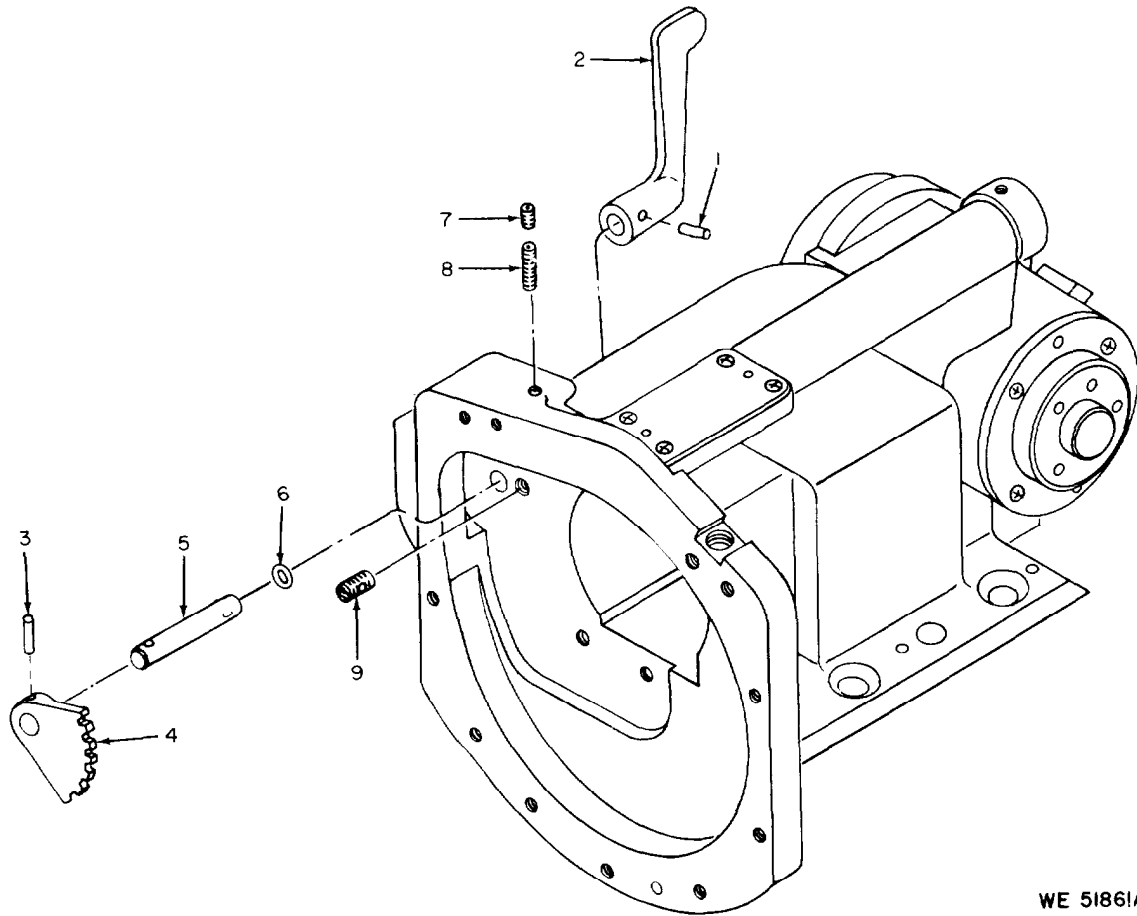
Figure 27. Prism assembly-exploded view.

	X 1 -		HOUSING 8624594 (19200)		1								28	13
N	P-H-	5315-469-6909	STUD 8624624 (19200)	EA	1			*	*	*		*	28	14
N	P-H-	1240-759-6656	GEAR, SPUR CRES, 72 T 8624578 (19200)	EA	1			*	*	*		*	28	15



WE 51860A

Figure 28. Filter assembly 8624551 and related parts---exploded view.

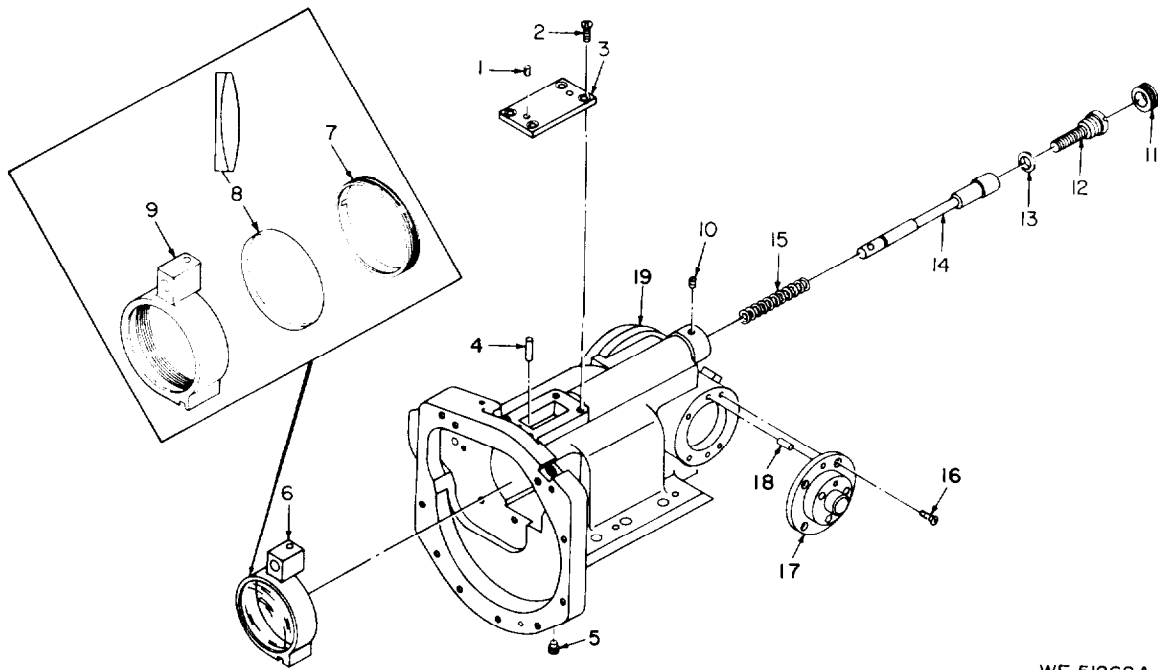


WE 51861A

Figure 29. Filter lever and related parts-exploded view.

Actn Chng Code	(1) SMR CODE	(2) FEDERAL STOCK NUMBER	(4) DESCRIPTION Reference Number & Mfr Code USABLE ON CODE	(4) UNIT OF MEAS	QTY INC IN UNIT	30-DAY DS MAINT ALLOW			30-DAY GS MAINT ALLOW			(8) 1-yr slw per 100 Equip Cnctg	(9) Dep Maint slw per 100 Equip	(10) ILLUST		
						(A) 1- 20	(B) 21- 50	(C) 51- 100	(A) 1- 20	(B) 21- 50	(C) 51- 100			(A) FIG NO	(B) ITM NO	
			FILTER HOUSING ASSEMBLY		2											
N	X I -		SETSCREW, HEXAGON SOCKET, FLAT P O I N T AL STL, CD PLD, NO. 8-32UNC-3, 1/8 IN L MS5196527 (96906)											30	1	
	P-F-	5305-763-7822	SCREW, MACHINE FLAT HEAD, CROSS RECESSED CRES, PSVT FNSH, NO. 4-40UNC-2, 5/16 IN L MS51959-14 (96906)	EA	4	*	*	*	*	*	*	*	*	30	2	
	X I -		COVER 10533427 (19200)		1									30	3	
	X I -		PIN, STRAIGHT, HEADLESS DWL, CRES, 1/16 IN DIA, 1/2 IN L MS16555-606 (96906)		1									30	4	
	X I -		SCREW, SPECIAL CRES, NO. 10-32UNF-3,5/16 IN L 10533430 (19200)		1									30	5	
C	P-D-	1240-903-3886	CELL ASSEMBLY 16533431 (19200)	EA	1							*	*	30	6	
	X I -		RING, RETAINING AL ALY, SLTD, 1-7/8-32UNS-2, 0.22 IN THK 10533428 (19200)		1									30	7	
	X I -		LENS, OPTICAL INSTRUMENT 8624650 (19200)		1									30	8	
	X I -		CELL, OPTICAL ELEMENT 10533423 (19200)		1									30	9	
c	P-H-	5305-078-8708	SETSCREW, HEXAGON SOCKET, HALF DOG POINT CRES, PSVT FNSH, NO. 6-32UNC-3, 1/8 IN L MS51045-18 (96906)	EA	1				*	*	*	*	*	30	10	
	X I -		RETAINER AL ALY, 5/8-32UNS-2 OD, 3/16 IN THK 10533426 (19200)		1									30	11	
N	P-H	5305-9594994	SCREW, SPECIAL CRES, SLTD, 1/4-28UNF-2,1-1/4 IN L 10533425 (19200)	EA	1				*	*	*	*	*	30	12	

C	P-H-	5330-930-6769	PACKING, PREFORMED RBR, 0.301 IN ID, 0.070 IN THK 8624710-8 (19200)	EA	1				*	*	*		*		
	X 1 -		SHAFT CRES, 1/4-28UNF-2 ID, 4.16 IN L 10533424 (19200)		1										14
N	P-H-	5340-912-2669	SPRING, HELICAL COMPRESSION MUW, 2-3/8 IN FREE L, 14 COILS 10533429 (19206)	EA	1				*	*	*		*		15
N	P-D-	5305-763-6963	*SCREW, MACHINE FLAT HEAD, CROSS RECESS CRES, PSVT FNSH, NO. 6-32UNC-2, 3/8 IN L MS51959-28 (96906)	EA	4								*		16
	X 1 -		*BEARING 8624580 (19200)		1								*		17
	X 1 -		*PIN, STRAIGHT, HEADLESS DWL, CRES, 1/8 IN DIA, 3/8 IN L MS16555-625 (96906)		2										18
	X 1 -		HOUSING ASSEMBLY 8624715 (19200) *COMPONENT OF HOUSING ASSEMBLY 8624715		1										19



WE 51862A

Figure 30. Filter housing assembly-partial exploded view.

Section III. SPECIAL TOOLS LIST

Actn Chng Code	(1) SMR CODE	(2) FEDERAL STOCK NUMBER	(3) DESCRIPTION Reference Number & Mfr Code	(4) UNIT OF MEAS	(5) QTY INC I N UNIT	(6) 30-DAY DS MAINT ALLOW			(7) 30-DAY GS MAINT ALLOW			(8) 1-yr alw per 100 Equip Cntgty	(9) Dep Maint alw per 100 Equip	(10) ILLUST	
						(A)	(B)	(C)	(A)	(B)	(C)			(A)	(B)
						1- 2 0	21- 50	51- 100	1- 2 0	21- 50	51- 100			FIG NO	ITM NO
C	P-O-	1240-906-7945	EQUIPMENT HANGER EYEPIECE ASSEMBLY 8570106 (19200)	EA	1	*	1	*	*	*	1	1			

Actn Chng Code	SMR CODE	FEDERAL STOCK NUMBER	DESCRIPTION Reference Number & Mfr Code USABLE ON CODE	(4) UNIT OF MEAS	(5) QTY INC IN UNIT	(6) 30-DAY DS			(7) 30-DAY GS			(8) 1-yr slw per 100 Equip Cntry	(9) Dep Maint slw per 100 Equip	(10) ILLUST		
						MAINT	ALLOW		AIN	ALLOW				(A)	(B)	
						(A) 1- 20	(B) 21- 50	(C) 51- 100	(A) 1- 20	(B) 21- 50	(C) 51- 100			(A) FIG NO	(B) ITM NO	
			HANGER ASSEMBLY													
C	P-F-	5315-234-1854	PIN, COTTER CRES, PSVT FNSH, 1/16 IN DIA, 3/4 IN L MS24665-153 (96906)	EA	1	*	*	*	*	*	*		*	31	1	
C	P-F-	5310-773-7618	WASHER, FLAT, ROUND CRES, 0.406 IN ID, 0.065 IN THK MS15795-814 (96906)	EA	1	*	*	*	*	*	*		*	31	2	
C	P-F-	5315-956-5139	PIN, HEADED CRES, 0.374 IN DIA, 2-1/4 IN L 10541750 (19200)	EA	1	*	*	*	*	*	*		*	31	3	
C	P-D-	3120-914-7018	BEARING, SPHERICAL CRES, 5000 IN ID, 1.000 IN OD, .5000 IN W 8570108-2 (19200)	EA	1								*	31	4	
	X 1 -		LINK 8570107 (19290)		1									31	5	
C	P-F-	5365-804-7645	RING, RETAINING, EXTERNAL CRES, 0.500 IN DIA MS16624-4050 (96906)	EA	1	*	*	*	*	*	*		*	31	6	

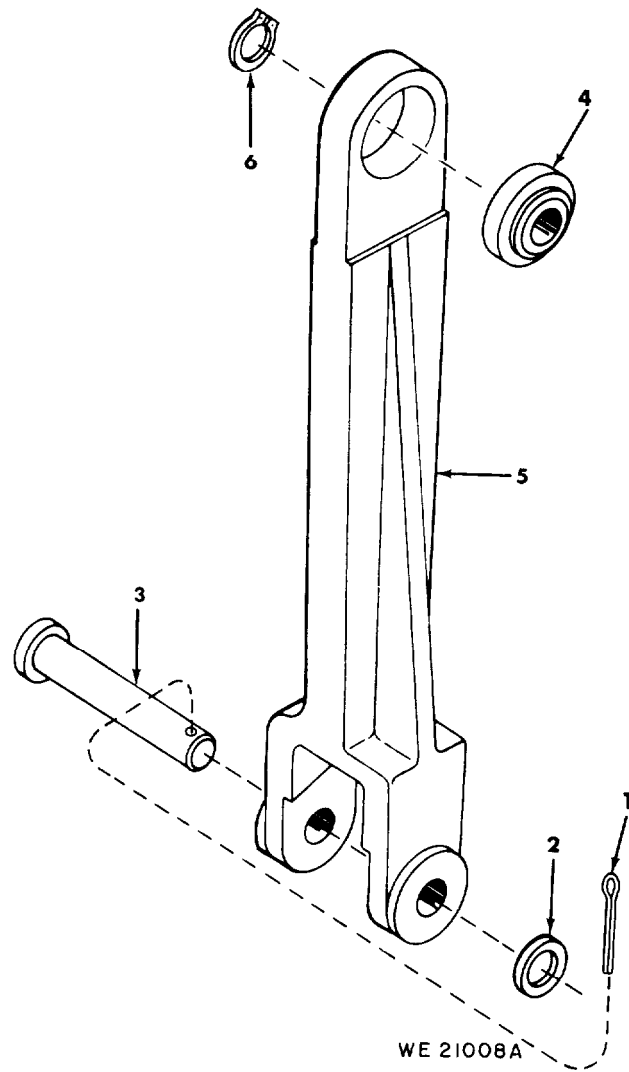


Figure 31. Hanger assembly 8570106--exploded view.

**Section IV. FEDERAL STOCK NUMBER AND REFERENCE
NUMBER INDEX**

<i>STOCK NUMBER</i>	<i>FIGURE NO.</i>	<i>ITEM NO.</i>	<i>STOCK NUMBER</i>	<i>FIGURE NO.</i>	<i>ITEM NO.</i>
1220-087-2729	9	2	5305-054-5648	16	1
1240-012-2951	1	2	5305-054-5649	16	10
1240-012-2951	1	2	5305-054-5649	25	2
1240-012-2951	3	2	5305-954-6651	19	4
1240-045-4349	18	12	5305-054-6651	21	9
1240-045-4353	7	9	5303-054-6651	5	4
1240-239-5874	14	6	5305-054-6651	2	17
1240-403-6857	14	13	5305-054-6652	15	9
1240-403-6857	22	4	5305-054-6652	17	4
1240-464-4792	23	14	5305-054-6652	17	9
1240-464-4792	9	11	5305-054-6652	14	4
1240-477-3798	6	6	5305-054-6652	1	16
1240-475-3799	6	3	5305-054-6652	27	6
1240-484-3667	14	3	5305-054-6654	27	1
1240-491-0393	6	10	5305-054-6655	3	13
1240-498-6372	5	8	5305-054-6669	26	8
1240-498-6373	26	2	5305-054-6670	26	10
1240-553-7955	11	8	5305-054-6670	13	1
1240-759-6656	28	15	5305-054-6670	10	3
1240-853-7764	4	5	5305-059-3673	4	2
1240-865-7703	24	2	5305-060-3849	14	10
1240-903-3883	5	8	5305-060-3849	26	1
1240-903-3884	26	2	5305-078-8708	30	10
1240-903-3885	12	11	5305-272-4123	9	1
1240-903-3886	30	6	5305-272-4123	6	1
1240-906-6319	27	11	5305-531-0137	3	1
1240-906-6320	28	6	5305-531-0137	1	1
1240-906-6321	5	2	5305-531-0137	28	1
1240-906-7945			5305-551-0156	26	1
1240-930-6800	28	9	5305-551-0156	12	9
1240-930-6801	28	11	5305-551-0156	29	7
1240-930-6802	28	10	5305-576-7266	21	7
1240-944-7672	17	3	5305-625-3612	20	9
1240-944-7677	25	5	5305-625-3612	7	1
1240-944-7683	27	15	5305-625-3612	18	4
1240-944-7683	19	3	5305-638-2260	5	1
1240-944-7687	2	15	5305-655-9246	7	3
1240-944-7717	25	3	5305-685-3492	1	19
1240-944-7739	19	5	5305-685-3492	3	17
1240-945-5332	21	8	5305-701-5058	2	6
1240-945-5353	4	8	5305-701-5059	2	12
1240-946-1228	14	12	5305-702-9070	3	7
1240-946-1228	22	3	5305-727-8833	14	11
1240-949-8652	9	7	5305-727-8833	17	1
1240-949-8652	9	5	5305-727-8833	22	2
1240-949-8653	26	13	5305-763-6962	28	7
2640-060-3543	23	13	5305-763-6962	10	1
2640-060-3543	9	10	5305-763-6963	2	4
2640-114-1096	9	12	5305-763-6963	26	16
2640-114-1096	23	15	5305-763-6963	30	16
2640-507-9260	23	12	5305-763-7822	30	2
2640-507-9260	9	9	5305-764-2966	22	5
3120-914-7018	31	4	5305-764-2966	21	4
5305-050-9230	11	4	5305-770-2529	19	1
5305-054-5638	7	7	5305-899-3995	29	8
5305-054-5647	14	7	5305-930-6816	28	2
5305-054-5647	25	1	5305-939-0892	23	11
5305-054-5647	25	10	5305-956-2604	9	4
5305-054-5647	22	7	5305-956-2604	9	6
5305-054-5647	20	1	5305-958-7667	1	7
5305-054-5647	20	5	5305-959-2693	4	2
5305-054-5647	21	1	5305-959-6865	17	14
5305-054-5648	24	1	5305-959-6865	12	7

STOCK NUMBER	FIGURE NO	ITEM NO.	STOCK NUMBER	FIGURE NO.	ITEM NO.
5305-959-6994	30	12	5310-933-8121	4	3
5305-962-5758	4	7	5315-234-1854	31	1
5305-988-7601	12	1	5315-469-6906	28	5
5305-988-7601	27	3	5315-469-6909	25	14
5305-988-7608	3	3	5315-956-5139	31	3
5305-988-7608	1	3	5330-470-7510	11	3
5305-995-8766	27	9	5330-470-7511	1	10
5310-022-1432	1	5	5330-470-7511	1	15
5310-022-1432	3	5	5330-905-9871	29	6
5310-057-7158	18	1	5380-905-9871	20	21
5310-438-8605	20	14	5330-912-2656	17	8
5310-439-2597	20	15	5330-912-2656	17	13
5310-543-2739	26	1	5330-912-2656	5	6
5310-543-2739	26	9	5330-912-2657	1	22
5310-543-2739	2	7	5330-912-2657	3	20
5310-543-2739	13	2	5X30-912-2658	20	4
5310-543-2740	1	20	5330-912-2658	20	8
5310-543-2740	3	8	5330-912-2659	13	4
5310-543-2740	3	18	5330-912-2661	10	17
5310-543-5933	3	4	5330-912-2661	19	6
5310-543-5933	1	4	5330-912-2662	5	3
5310-550-3715	14	8	5330-912-2663	3	11
5310-550-3715	20	2	53X-912-2663	3	10
5310-550-3715	20	6	5330-912-2664	2	20
5310-550-3715	21	2	5330-930-6769	30	13
5310-550-3715	23	4	5330-990-8979	18	15
5310-616-3555	21	10	5330-990-8979	3	15
5310-616-3555	27	7	5330-990-8979	7	11
5310-616-3555	27	2	5340-582-4075	7	2
5310-616-3555	14	5	5340-582-4075	18	5
5310-616-3555	1	17	5340-582-4075	20	10
5310-616-3555	3	14	5340-685-0831	12	10
5310-616-3555	5	5	5340-834-0423	22	6
5310-616-3555	17	10	5340-912-2669	30	15
5310-616-3555	17	5	5340-930-6817	28	3
5310-722-5998	26	12	5340-955-9295	4	9
5310-773-7618	31	2	5355-930-6799	7	6
5310-880-5978	2	8	5355-930-6806	7	4
5310-905-1691	1	11	5355-930-6807	18	6
5310-928-2690	7	8	5355-949-9662	17	11
5310-928-2690	18	11	5355-949-9662	17	6
5310-930-6820	18	2	5360-230-1829	10	14
5310-933-8118	16	11	5360-400-8514	24	10
5310-933-8118	16	2	5360-400-8514	24	13
5310-933-8119	2	13	5365-804-7645	31	6
5310-933-8119	12	2	5935-905-9618	23	5
5310-933-8119	10	4	5999-448-5303	14	9
5310-933-8119	27	4	6240-921-4493	14	1
5310-933-8120	11	5	6240-921-4493	22	1
5310-933-8121	1	8			

REFERENCE NO.	MFR. CODE	FIGURE NO.	ITEM NO.	REFERENCE NO.	MFR. CODE	FIGURE NO.	ITEM NO.
MS16555-625	96906	30	18	MS15795-807	96906	2	8
MS16555-625	96906	26	18	MS15795-814	96906	31	2
MS16995-20	96906	12	4	MS16555-602	96906	18	7
MS16995-25	96906	12	1	MS16555-602	96902	18	13
MS16996-23	96906	1	7	MS16555-602	96906	7	10
MS18066-69	96906	1	14	MS16555-603	96906	20	12
MS35338-136	96906	12	5	MS16555-606	96906	30	4
MS35338-137	96906	12	2	MS16555-617	96906	20	17
MS35338-139	96906	1	8	MS16555-617	96906	26	15
MS51957-18	96906	14	2	MS16555-617	96906	24	9
MS51959-28	96906	26	16	MS16555-617	96906	7	5
MS51959-28	96906	30	16	MS16555-617	96906	16	13
MS51972-1	96906	1	11	MS16555-618	96906	7	13
MS15795-805	96906	26	12	MS16555-618	96906	24	3

REFERENCE NO.	MFR. CODE	FIGURE NO.	ITEM NO.	REFERENCE NO.	MFR. CODE	FIGURE NO.	ITEM NO.
MS16555-618	96906	18	14	MS85338-137	96906	27	4
MS16555-620	96906	29	3	MS35338-138	96906	11	5
MS16555-620	96906	2	16	MS35338-139	96906	4	3
MS16555-621	96906	10	7	MS35338-149	96906	1	12
MS16555-621	96906	29	1	MS51021-10	96906	7	3
MS16555-621	96906	27	12	MS51021-11	96906	25	12
MS16555-622	96906	11	1	MS51021-21	96906	28	1
MS16555-623	96906	10	15	MS51021-21	96906	1	1
MS16555-625	96906	19	7	MS51021-21	96906	3	1
M816555-625	96906	25	4	MS51021-22	96906	21	7
MS16555-627	96906	11	7	MS51021-23	96906	6	1
MS16555-627	96906	13	5	MS51021-23	96903	9	1
MS16555-629	96906	10	5	MS51021-31	96906	12	9
MS16555-640	96906	5	9	MS51021-31	96906	26	1
MS16555-640	96906	2	11	MS51021-31	96906	29	7
MS16555-640	96906	26	19	MS51021-34	96906	5	1
MS16555-641	96906	3	16	MS51021-9	96906	22	12
MS16555-648	96906	19	8	MS51023-72	96906	23	11
MS16624-4037	96906	10	9	MS51029-17	96906	26	1
MS16624-4050	96906	31	6	MS51029-17	96906	14	10
MS16995-25	96906	27	3	MS51029-27	96906	27	9
MS16995-36	96906	3	3	MS51029-29	96906	29	8
MS16995-36	96906	1	3	MS51029-60	96906	21	6
MS21209-CO815	96906	27	5	MS51031-25	96906	11	11
MS24665-153	96906	31	1	MS51045-18	96906	30	10
MS24674-25	96906	1	19	MS51377-2	96906	23	13
MS24674-25	96906	3	17	MS51377-2	96906	9	10
MS24692-3	96906	16	8	MS51607-1	96906	9	12
MS24692-6	96906	16	14	MS51607-1	96906	23	15
MS24692-6	96906	21	14	MS51957-1	96906	9	13
MS35191-288	96906	4	2	MS51957-1	96906	2	1
MS35212-11	96906	23	1	MS51957-13	96906	14	7
MS35307-318	96906	3	7	MS51957-13	96906	25	1
MS35333-69	96906	2	2	MS51957-13	96906	21	1
MS35333-69	96906	9	14	MS51957-13	96906	22	7
MS35333-70	96906	14	8	MS51957-13	96906	25	10
MS35333-70	96906	23	4	MS51957-13	96906	20	5
MS35333-70	96906	21	2	MS51957-13	96906	20	1
MS35333-70	96906	20	6	MS51957-14	96906	23	3
MS35333-70	96906	20	2	MS51957-14	96906	24	1
MS35333-71	96906	21	10	MS51957-14	96906	16	1
MS35333-71	96906	27	2	MS51957-15	96906	16	10
MS35333-71	96906	27	7	MS51957-15	96906	25	2
MS35333-71	96906	14	5	MS51957-18	96906	15	1
MS35333-71	96906	1	17	MS51957-27	96906	5	4
MS35333-71	96906	3	14	MS51957-27	96906	2	17
MS35333-71	96906	17	5	MS51957-27	96906	21	9
MS35333-71	96906	17	10	MS51957-27	96906	19	4
MS35333-71	96906	5	5	MS51957-28	96906	27	6
MS35333-72	96906	2	7	MS51957-28	96906	14	4
MS35333-72	96906	13	2	MS51957-28	96906	15	9
MS35333-72	96906	26	9	MS51957-28	96906	17	9
MS35333-72	96906	26	11	MS51957-28	96906	17	4
MS35333-73	96906	1	4	MS51957-28	96906	1	16
MS35333-73	96906	3	4	MS51957-3	96903	18	10
MS35333-74	96906	3	8	MS51957-3	96906	24	7
MS35333-74	96906	3	18	MS51957-30	96906	27	1
MS35333-74	96906	1	20	MS51957-31	96906	3	13
MS35333-87	96906	23	2	MS51957-4	96906	7	7
MS35338-134	96906	7	8	MS51957-44	96906	26	8
MS35338-134	96906	18	11	MS51957-45	96906	26	10
MS35338-135	96906	16	2	MS51957-45	96906	13	1
MS35338-135	96906	16	11	MS51957-45	96906	10	3
MS35338-136	96906	15	10	MS51957-64	96906	11	4
MS35338-137	96906	2	13	MS51958-42	96906	2	6
MS35338-137	96906	10	4	MS51958-43	96906	2	12

REFERENCE NO.	MFR CODE	FIGURE NO.	ITEM NO.	REFERENCE NO.	MFR CODE	FIGURE NO.	ITEM NO.
MS51958-77	96906	4	2	10553193	19200	11	2
MS51959-11	96906	19	1	10553194	19200	10	8
MS51959-14	96906	30	2	10553195	19200	10	12
MS51959-2	96906	21	4	10553196	19200	9	15
MS51959-2	96906	22	5	10553197	19200	10	17
MS51959-27	96906	28	7	10553199	19200	10	6
MS51959-27	96906	10	1	10553200	19200	26	20
MS51959-28	96906	2	4	10553201	19200	8	5
MS51959-3	96906	14	11	10553202	19200	11	8
MS51959-3	96906	17	1	10553204	19200	9	16
MS51959-3	96906	22	2	10563206	19200	11	15
MS51965-27	96906	21	11	10551207	19200	11	16
MS51965-27	96906	27	10	10553209	19200	11	6
MS51965-27	96906	27	13	10553476	19200	4	5
MS51965-27	96906	30	1	11727579	19200	14	13
MS51965-27	96906	26	14	11727579	19200	22	4
MS51965-27	96906	12	17	11730901	19200	4	4
MS51965-27	96906	12	18	11739269	19200	1	13
MS51965-27	96906	2	14	221432	21450	1	5
MS51965-27	96906	12	8	221432	21450	3	5
10514713	19200	22	6	544110	21450	16	5
10516567	19200	23	14	586477	21450	22	9
10516567	19200	9	11	76519G5	19200	25	19
10533423	19200	30	9	7651965	19200	25	15
10533424	19200	30	14	7651965	19200	24	11
10533425	19200	30	12	7651965	19200	24	15
10533426	19200	30	11	8200055	19200	23	12
10533427	19200	30	3	8200055	19200	9	9
10533428	19200	30	7	8570107	19200	31	5
10533429	19200	30	15	8570108-2	19200	31	4
10533430	19200	30	5	8577789	19200	19	5
10533431	19200	30	6	8590801	19200	21	13
10541528	19200	23	7	8590832	19200	20	9
10541528	19200	16	19	8590832	19200	7	1
10541750	19200	31	3	8590832	19200	18	4
10549759	19200	14	6	8590833	19200	18	5
10549774	19200	15	5	8590833	19200	7	2
10549775	19200	15	3	8590833	19200	20	10
10549776	19200	15	8	8619853	19200	18	15
10549777	19200	15	7	8619853	19200	7	11
10549780	19200	14	9	8619986	19200	9	2
10549781	19200	15	11	8620013	19200	12	10
10549782	19200	15	6	8620836	19200	25	13
10549783	19200	14	3	8624501	19200	3	19
10549784	19200	15	12	8624501	19200	1	21
10549867	19200	3	2	8624502	19200	13	3
10549867	19200	1	2	8624504	19200	9	16
10553065	19200	24	5	8624506	19200	25	6
10553066	19200	24	2	8624507	19200	17	15
10553176	19200	10	10	8624512	19200	27	11
10553177-1	19200	11	3	8624513	19200	27	17
10553177-2	19200	1	15	8624515	19200	2	15
10553177-2	19200	1	10	8624516	19200	12	19
10553178	19200	11	14	8624517	19200	25	3
10553180	19200	10	13	8624519	19200	21	8
10553181	19200	11	10	8624520	19200	7	4
10553182	19200	11	13	8624522-1	19200	17	7
10553183	19200	11	12	8624522-2	19200	17	12
10553184	19200	11	9	8624524	19200	18	6
10553185	19200	10	16	8624526	19200	3	12
10553186	19200	10	11	8624527	19200	14	1 4
10553187	19200	10	2	8624528	19200	6	11
10553188	19200	10	14	8624529	19200	7	14
10553190	19200	5	a	8624530	19200	7	12
10553191	19200	26	2	8624531	19200	7	6
10553192	19200	26	7	8624532	19200	8	5

REFERENCE NO.	MFR CODE	FIGURE NO.	ITEM NO.	REFERENCE NO.	MFR CODE	FIGURE NO.	ITEM NO.
8624535	19200	4	10	8624617-1	19200	18	12
8624538	19200	2	19	8624617-2	19200	7	9
8624540	19200	25	20	8624618	19200	17	6
8624541	19200	25	16	8624618	19200	17	11
8624542	19200	24	14	8624619	19200	9	4
8624543	19200	24	16	8624619	19200	9	6
8624544	19200	24	12	8624620	19200	9	3
8624545	19200	22	16	8624621	19200	2	5
8624547	19200	18	17	86246222	19200	2	18
8624548-1	19200	18	16	8624623	19200	28	5
8624548-2	19200	18	16	8624624	19200	28	14
8624551	19200	28	6	8624625	19200	28	3
8624553	19200	5	2	8624627	19200	29	5
8624554	19200	6	2	8624628	19200	27	8
8624555	19200	5	7	8624629	19200	28	2
8624556	19200	5	8	8624632	19200	9	15
8624557	19200	26	2	8624635	19200	2	3
8624558	19200	9	5	8624636	19200	27	15
8624558	19200	9	7	8624636	19200	19	3
8624559	19200	12	11	8624637	19200	25	5
8624560	19200	26	13	8624638	19200	21	16
8624561	19200	28	4	8624638	19200	16	7
8624562	19200	4	6	8624639	19200	21	3
8624567-1	19200	20	7	8624642	19200	17	3
8624567-2	19200	20	3	8624645	19200	17	2
8624568	19200	20	16	8624646	19200	16	16
8624569	19200	25	18	8624647	19200	28	9
8624570	19200	25	8	8624648	19200	28	11
8624572-1	19200	18	3	8624649	19200	28	10
8624572-2	19200	18	3	8624650	19200	30	8
8624576	19200	29	2	8624653	19200	6	10
8624577	19200	29	4	8624654	19200	6	8
8624578	19200	28	15	8624655	19200	6	6
8624579	19200	2	9	8624656	19200	6	9
8624580	19200	26	17	8624657	19200	6	7
8624580	19200	30	17	8624658	19200	6	4
8624581	19200	21	12	8624659	19200	6	3
8624582	19200	19	2	8624660	19200	8	2
8624583	19200	22	1	8624661	19200	8	4
8624583	19200	14	1	8624663	19200	8	3
8624584	19200	21	17	86324664	19200	26	6
8624585-1	19200	21	15	8624665	19200	26	4
8624585-2	19200	16	15	8624666	19200	26	5
8624587	19200	14	12	8624667	19200	26	3
8624587	19200	22	3	8624667	19200	8	1
8624588	19200	16	12	8624669	19200	12	15
8624589	19200	16	4	8624670	19200	12	13
8624590	19200	16	6	8624671	19200	12	14
8624591	19200	16	9	8624672	19200	12	12
8624593	19200	28	8	8624675	19200	4	a
8624594	19200	28	13	8424676	19200	4	7
8624595	19200	28	12	8624677	19200	4	9
8624596	19200	6	5	8624681-1	19200	20	20
8624597	19200	12	16	8624681-1	19200	20	20
8624598	19200	26	7	8624682	19200	20	13
8624599	19200	20	18	8624685	19200	27	14
8624600	19200	20	19	8624688	19200	25	7
8624601	19200	20	15	8624689	19200	25	11
8624602	19200	20	14	8624690	19200	25	14
8624603-1	19200	20	11	8624690	19200	25	17
8624603-2	19200	20	11	8624691	19200	24	4
8624608	19200	27	16	8624F92	19200	24	8
8624611	19200	25	9	8624693	19200	24	10
8624612	19200	24	6	8624693	19200	24	13
8624613	19200	22	10	8624694	19200	22	11
8624615	19200	15	13	8624695	19200	22	15

REFERECE NO.	MFR CODE	FIG/RE NO.	ITEM NO.	REFERENCE NO.	MFR CODE	FIG/RR NO.	ITEM NO.
8624696	19200	22	8	8624711-1	19200	20	21
8624697	19200	22	14	8624711-2	19200	1	22
8624698	19200	15	2	8624711-2	19200	3	20
8624702	19200	15	4	8624712	19200	29	9
8624703	19200	18	1	8624714	19200	18	9
8624704	19200	18	8	8624715	19200	30	19
8624705	19200	4	4	8624716	19200	26	20
8624709	19200	18	2	8624717	19200	16	3
8624710-1	19200	17	13	8624718	19200	2	10
8624710-1	19200	5	6	8624719	19200	16	18
8624710-1	19200	17	8	8624719	19200	23	10
8624710-2	19200	2	20	8624720	19200	23	9
8624710-3	19200	5	3	8624721	19200	23	5
8624710-4	19200	3	10	8624722	19200	12	3
8624710-4	19200	3	11	8624723	19200	12	6
8624710-5	19200	13	4	8626469	19200	17	14
8624710-6	19200	20	4	8626469	19200	12	7
8624710-6	19200	20	8	8643116-2	19200	16	17
8624710-7	19200	19	6	8643116-2	19200	23	6
8624710-8	19200	30	13	8643116-2	19200	23	8
8624711-1	19200	29	6	8643116-2	19200	22	13

By Order of the Secretary of the Army:

W. C. WESTMORELAND,
General, *United States Army,*
Chief of Staff.

Official:

VERNE L. BOWERS,
Major General, United States Army,
The Adjutant General.

Distribution:

To be distributed in accordance with DA Form 12-41 (qty rqr Block #150), Direct/General Support requirements for Telescope, Articulated.

**TM 9-1240-311-34P, TELESCOPE, ARTICULATED: M127 (1240-437-1254) AND M119 (1240-762-9333)
AND HANGER ASSEMBLY (1240-906-7945)-1971**